



Freud Sanitary Pump Station
05/21/25

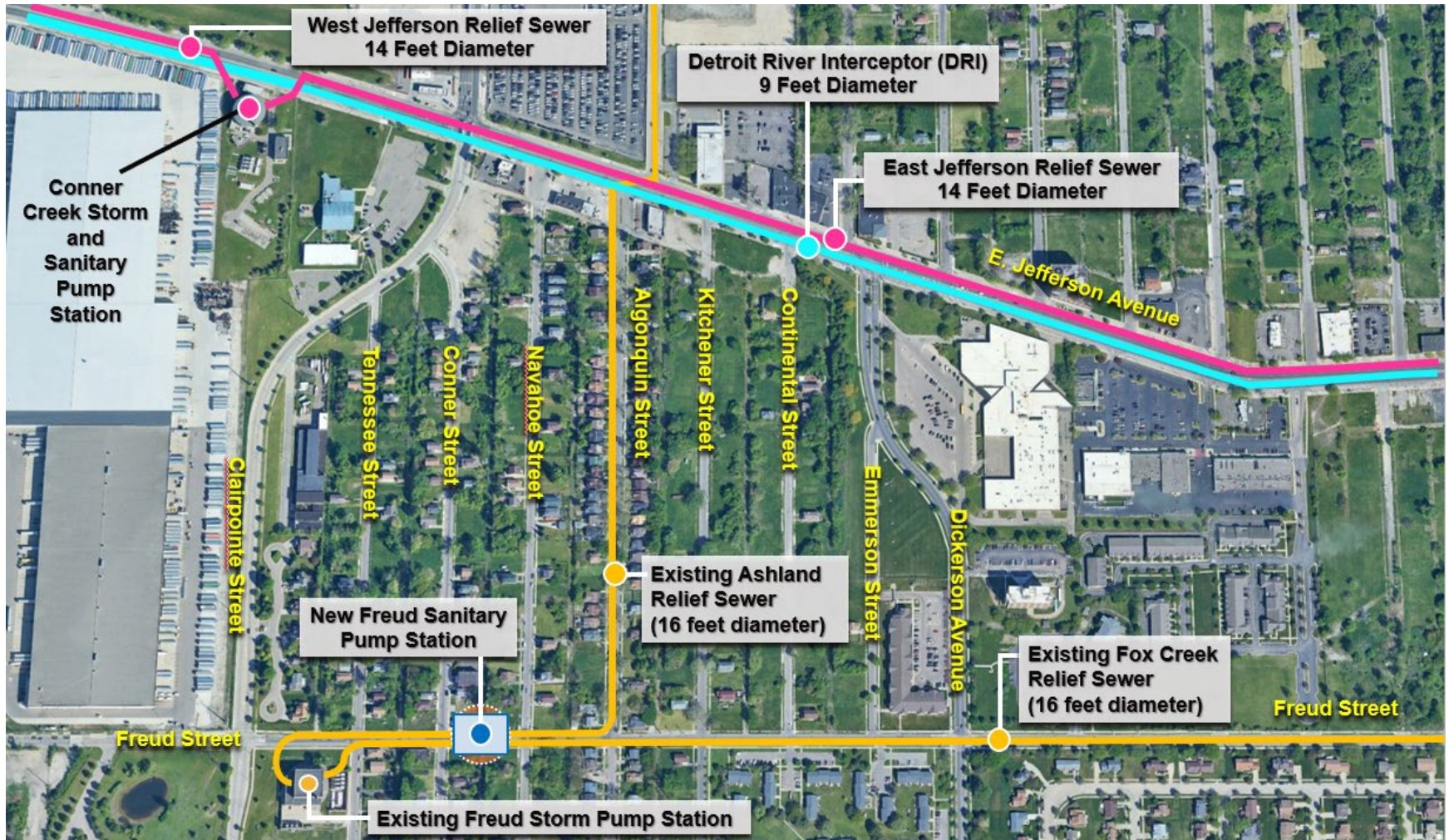
Agenda

- ◆ System Background
- ◆ Freud Improvements
 - ◆ Why is GLWA proposing a Sanitary Pump Station?
 - ◆ Why was the location chosen?
 - ◆ Why will Freud be rerouted?
- ◆ Design Review
 - ◆ Alternative Designs
 - ◆ Reduced Height
 - ◆ Exterior Design
- ◆ Project Progress
 - ◆ Where are we at?
 - ◆ What's next?
- ◆ Conner Creek Improvements
 - ◆ System Background
 - ◆ Storm Station Improvements
 - ◆ Why is GLWA proposing a new Sanitary Pump Station?
 - ◆ What's next?
- ◆ Questions

A dynamic splash of clear blue water against a light blue background, with a semi-transparent blue horizontal band across the middle.

System Background

System Background

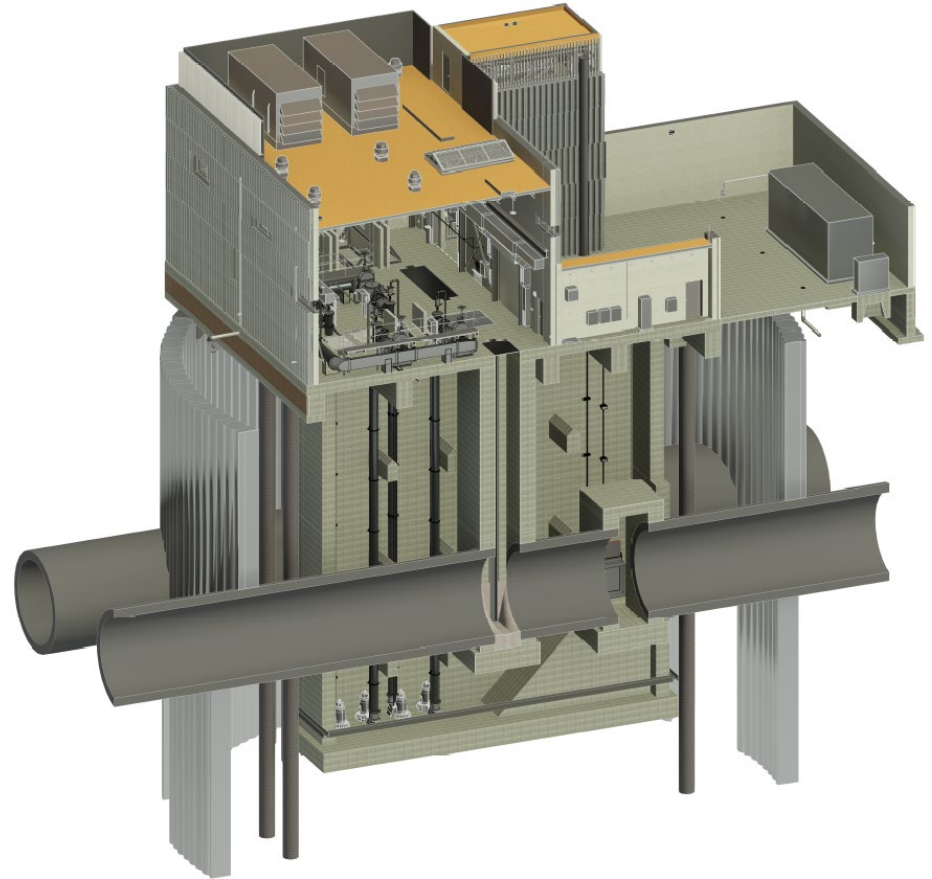


A dynamic splash of clear water against a light blue background, with a semi-transparent blue horizontal band across the middle. The water is captured in motion, with droplets and bubbles visible.

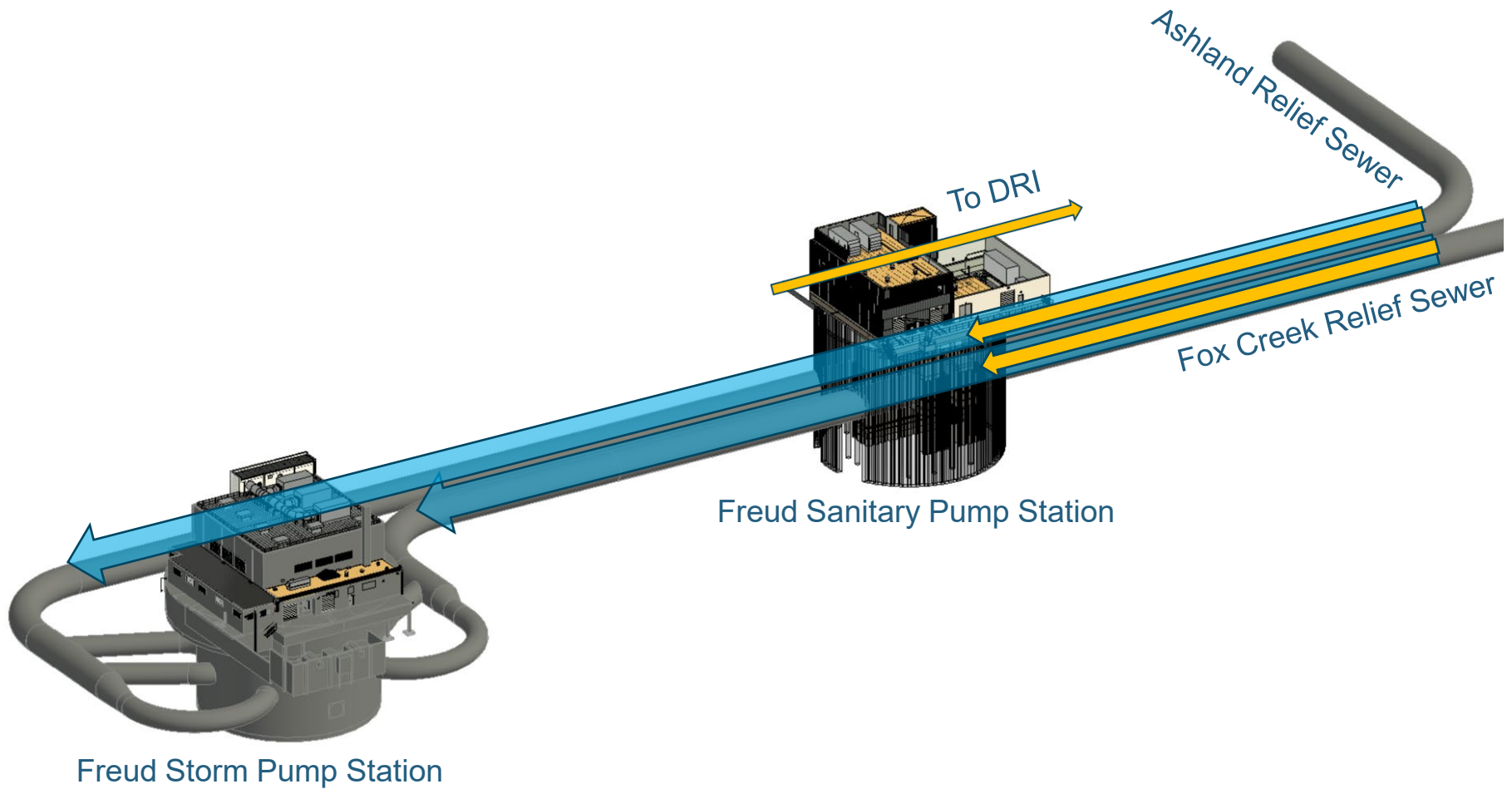
Freud Improvements

Why is GLWA Proposing a Sanitary Pump Station?

- 💧 Improve the Reliability of Freud Storm Pump Station
 - 💧 Cleaning
 - 💧 Inspection
 - 💧 Maintenance
 - 💧 Rehabilitation
- 💧 Maximize GLWA's ability to keep sewer water levels low during rain events
- 💧 Help prevent basement backups



Why is GLWA Proposing a Sanitary Pump Station?



Why Was The Location Chosen?



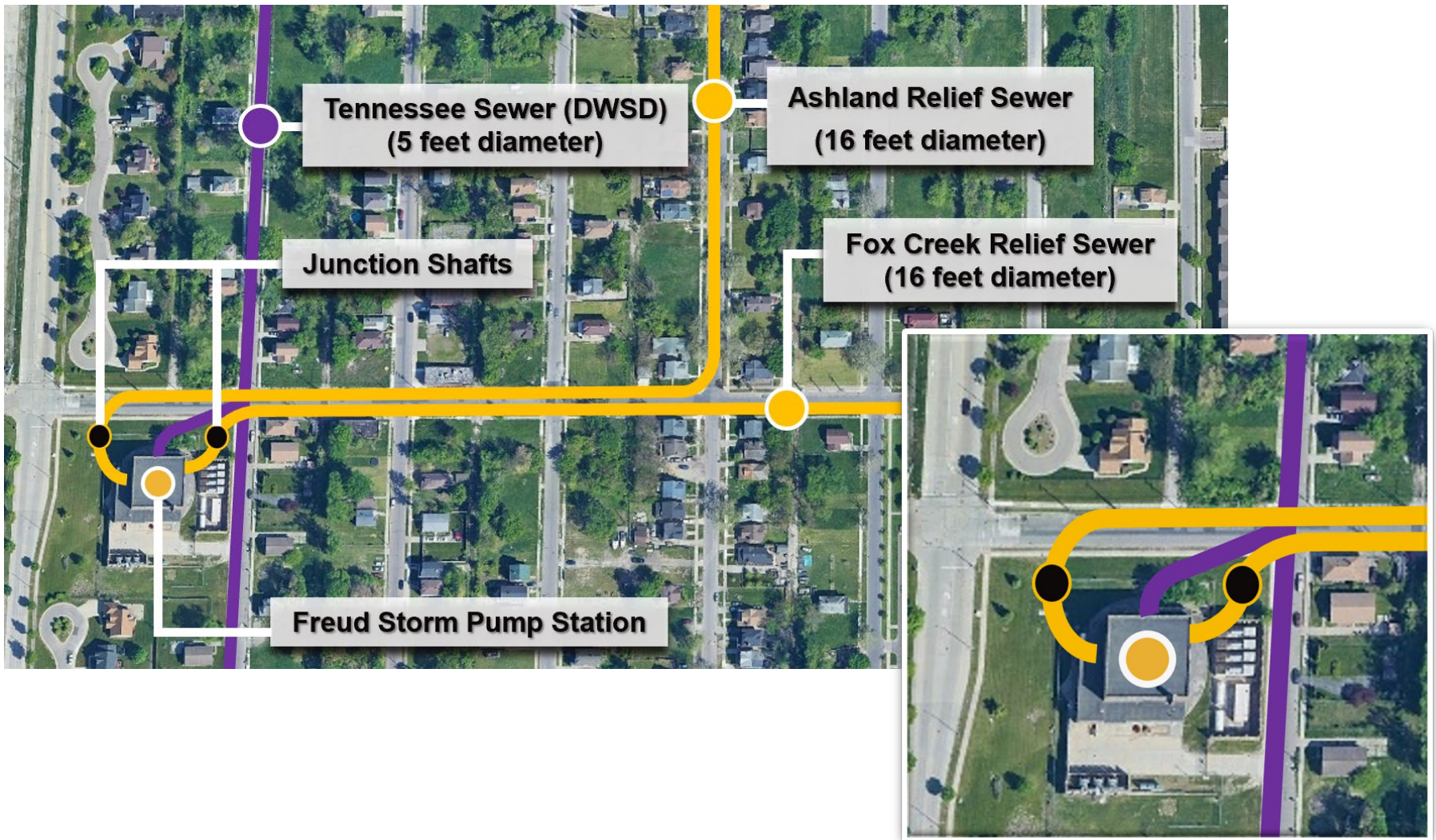
Why Will Freud Be Rerouted?



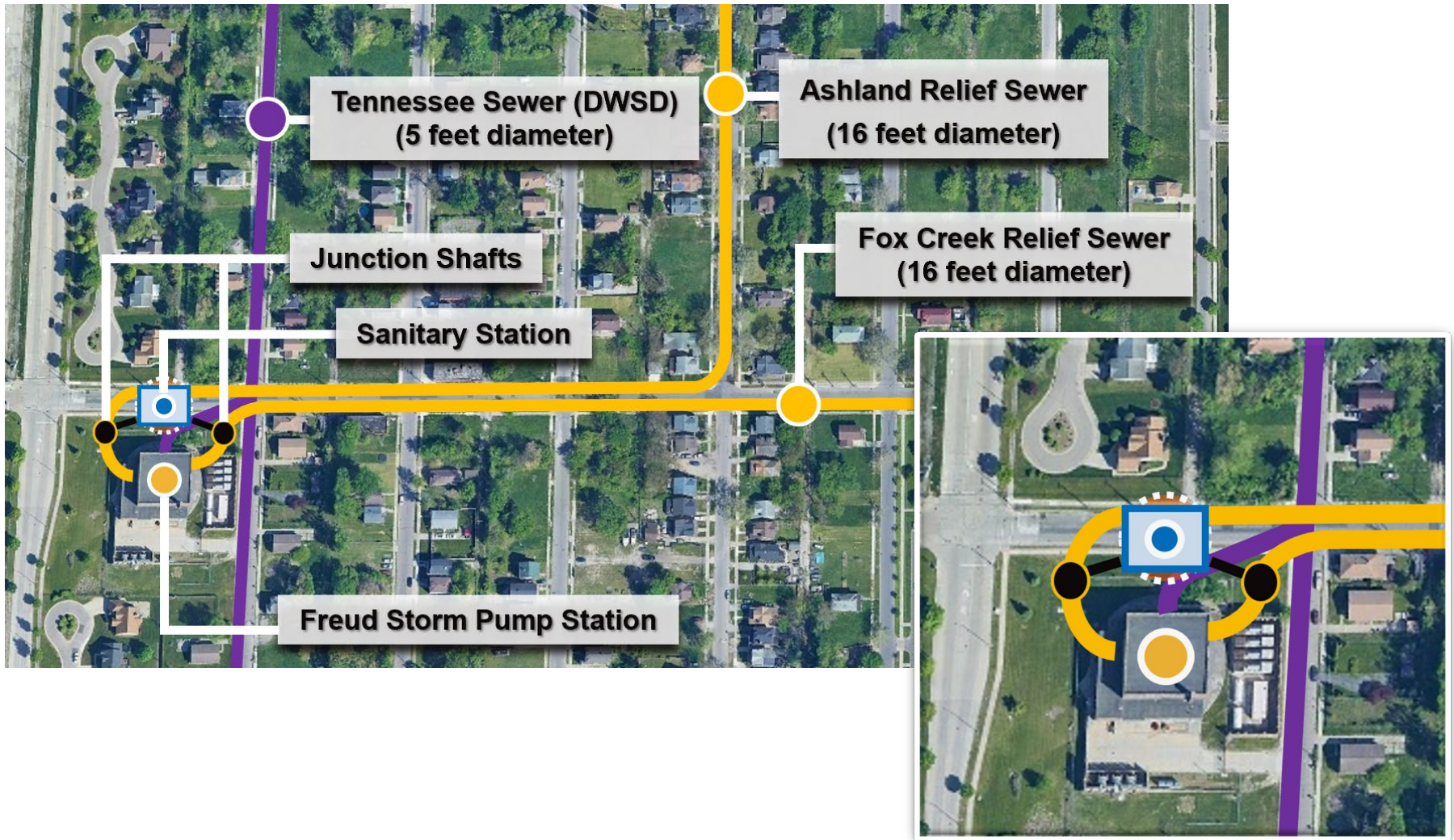
A dynamic splash of clear blue water against a light blue background, with a semi-transparent blue horizontal band across the middle.

Design Review

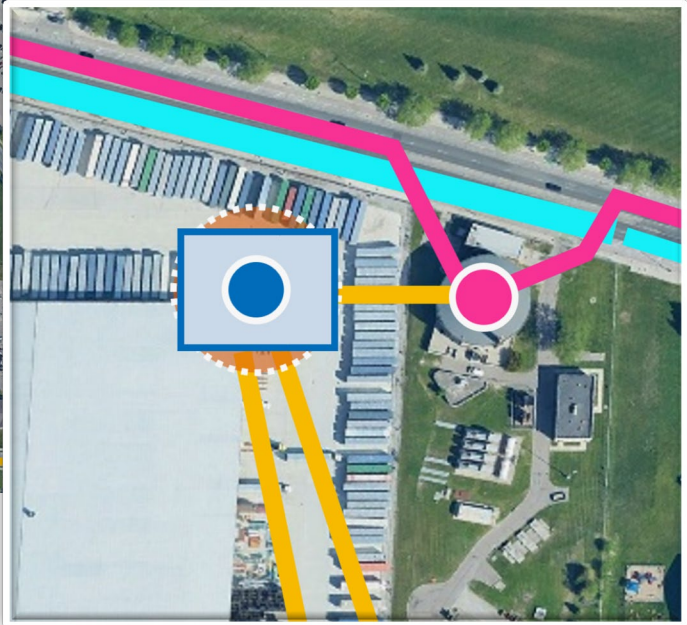
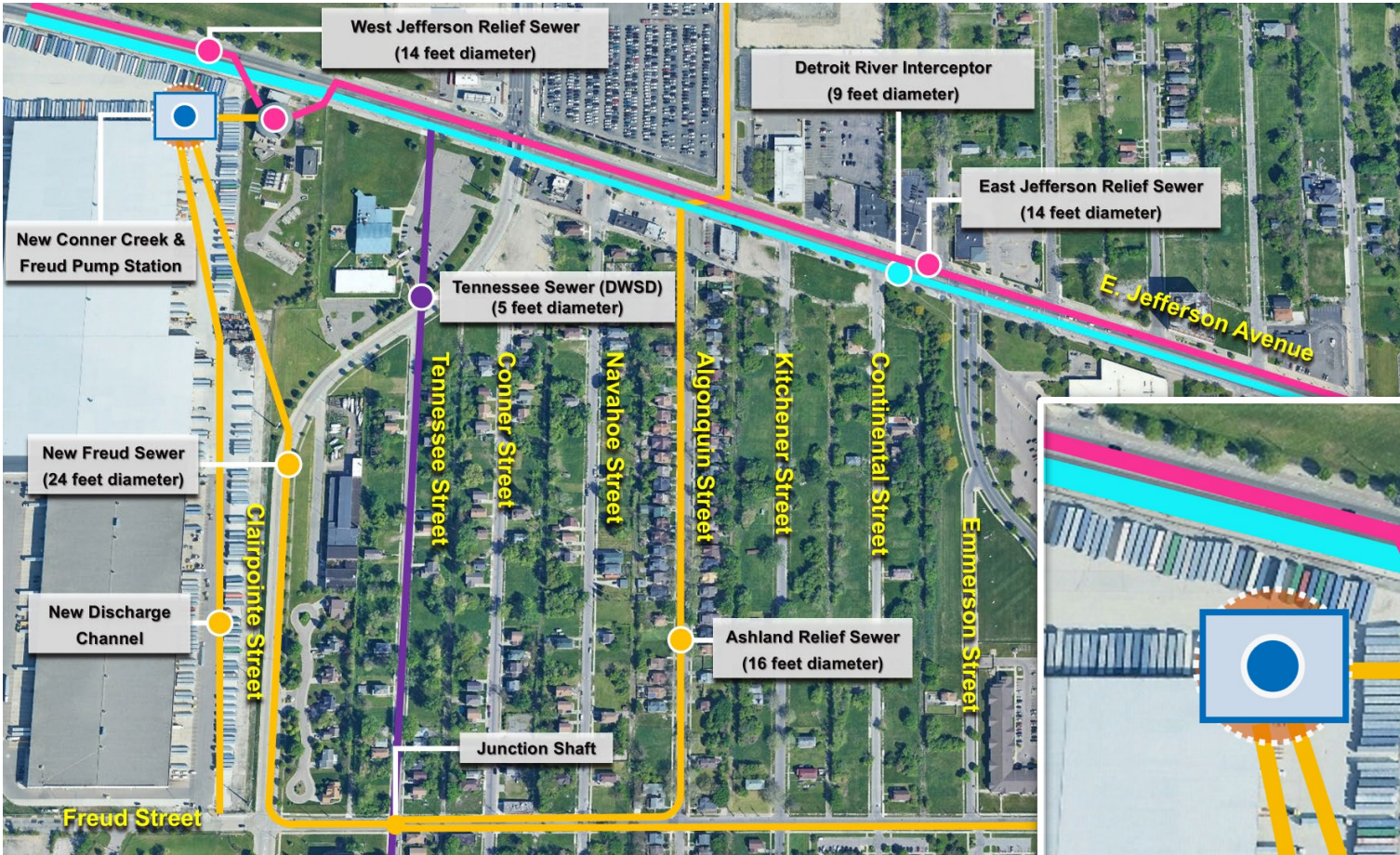
Design Alternative #1



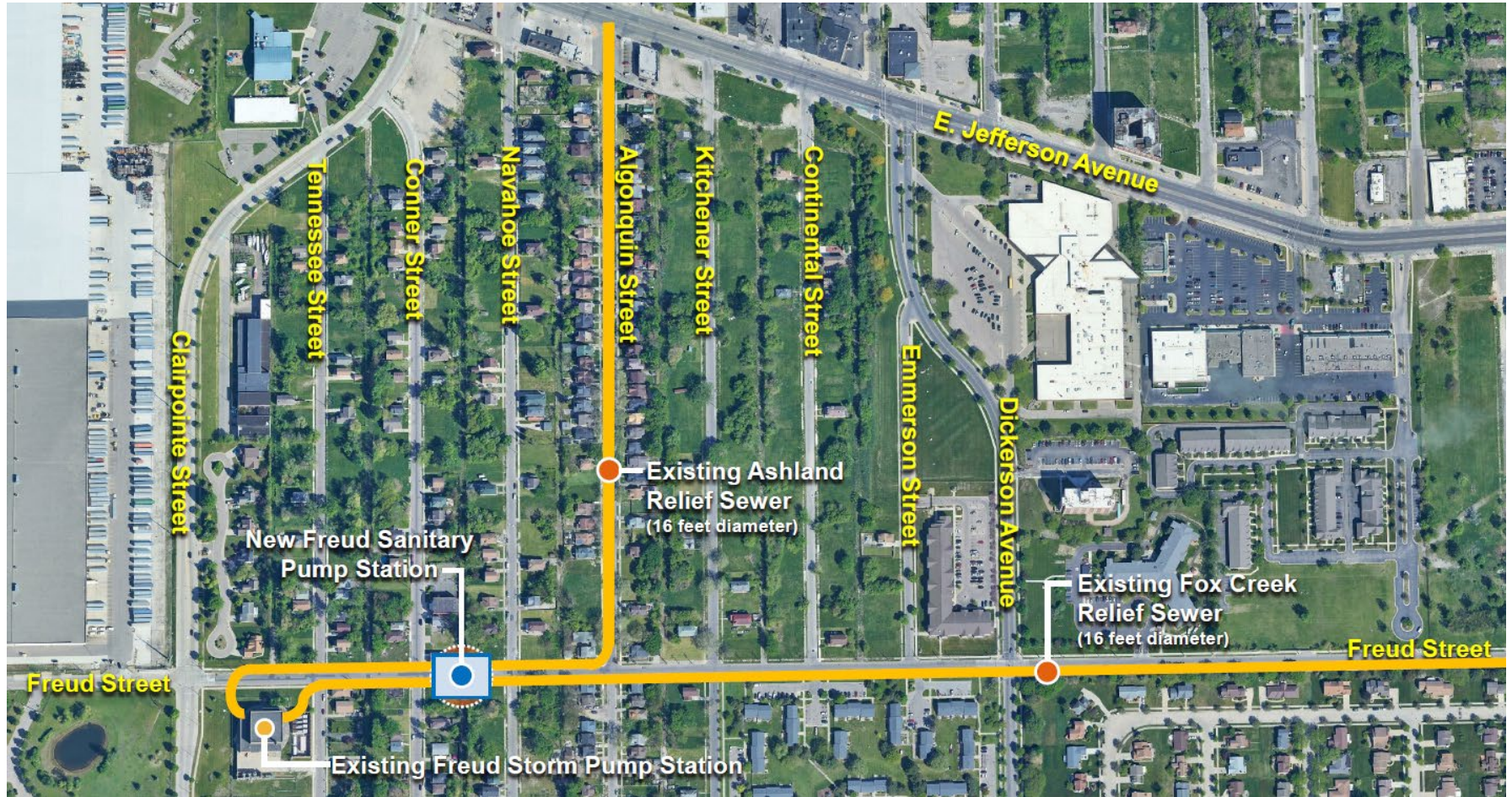
Design Alternative #2



Design Alternative #3



Why was a Variation of Alternative 2 Selected?



Exterior Design – Reduced Height



CURRENT NORTH ELEVATION

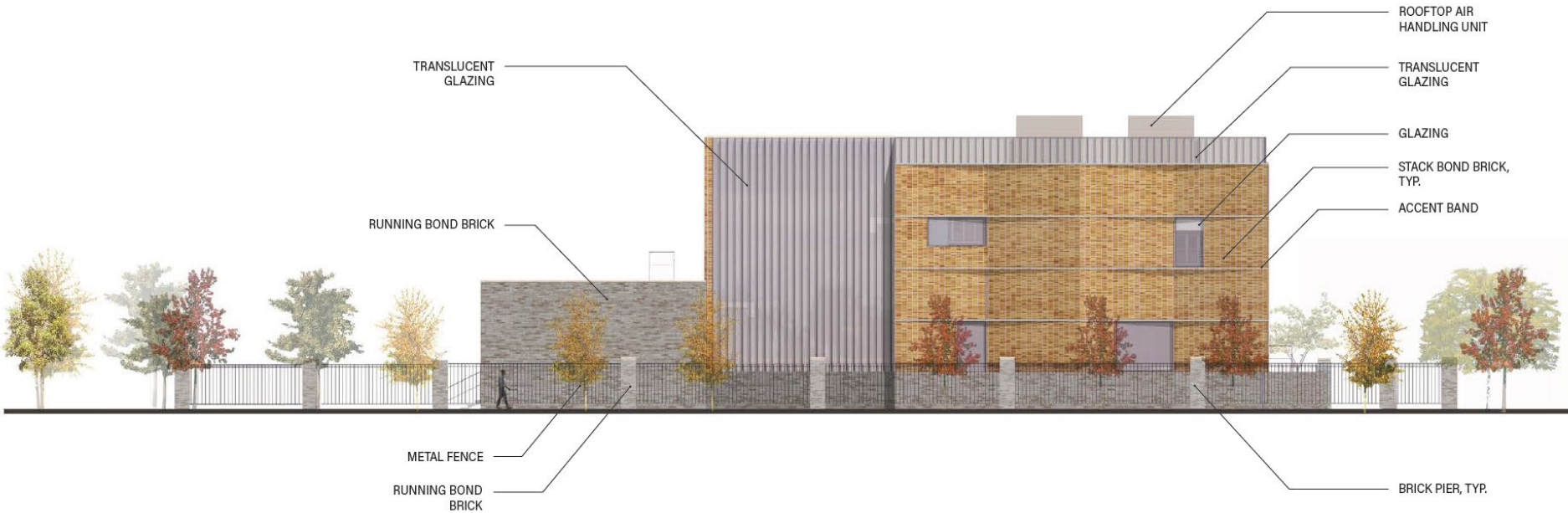


MODIFIED NORTH ELEVATION

Exterior Design – Scale



Exterior Design – North Elevation



Exterior Design – East Elevation



Exterior Design – South Elevation



Exterior Design – West Elevation



A dynamic background image of water splashing, with a central horizontal band of semi-transparent blue. The water is captured in motion, with droplets and bubbles visible throughout.

Project Progress

Where are we at? – Construction

💧 Utility Relocation

💧 Gas

💧 Complete

💧 Electric

💧 Complete

💧 Communication (6)

💧 Complete

💧 Sewer – 24" & 48"

💧 March-June

💧 Water – 16" & 24"

💧 April-July

💧 Rezoning

💧 Freud Street Closure



What's next? – Construction

💧 36" Force Main Installation

- 💧 Navahoe St

- 💧 Connects:

- 💧 Freud Sanitary Pump Station
- 💧 Detroit River Interceptor (DRI)

- 💧 May-December

💧 DRI Structure Installation

- 💧 Traffic Shift

- 💧 May-December



What's next? – Quarterly Meetings



The Great Lakes Water Authority (GLWA) will be hosting Quarterly Community Engagement Meetings for the new Freud Sanitary Pump Station Improvement Project.

Please join the GLWA Project Team to hear more about the construction of the new Freud Sanitary Pump Station located on Freud Street (between Conner & Navahoe) in the Jefferson Chalmers neighborhood as shown in the Overview Map in the below right corner.

For additional information, including FAQs, presentations, and project contact information, GLWA has established a project website that can be found by using this QR code.



glwater.org/freud-sanitary-pump-station

Meeting Dates & Time:

5:30 – 7:30 pm

12/11/24 ✓

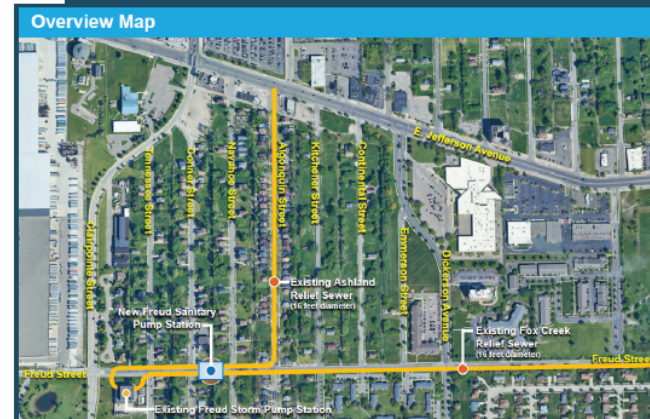
03/19/25 ✓

05/21/25 ✓

09/17/25


Meeting Location:

Eastlake Baptist Church
12400 E. Jefferson Ave.
Detroit, MI 48215



What's next? – Communication

💧 Website - www.glwater.org/freud-sanitary-pump-station

💧 QR Code - 

💧 Email - freudsanitarypumpstation@glwater.org

💧 Phone

💧 GLWA - (313) 822-7007

💧 Kokosing - (313) 960-7687

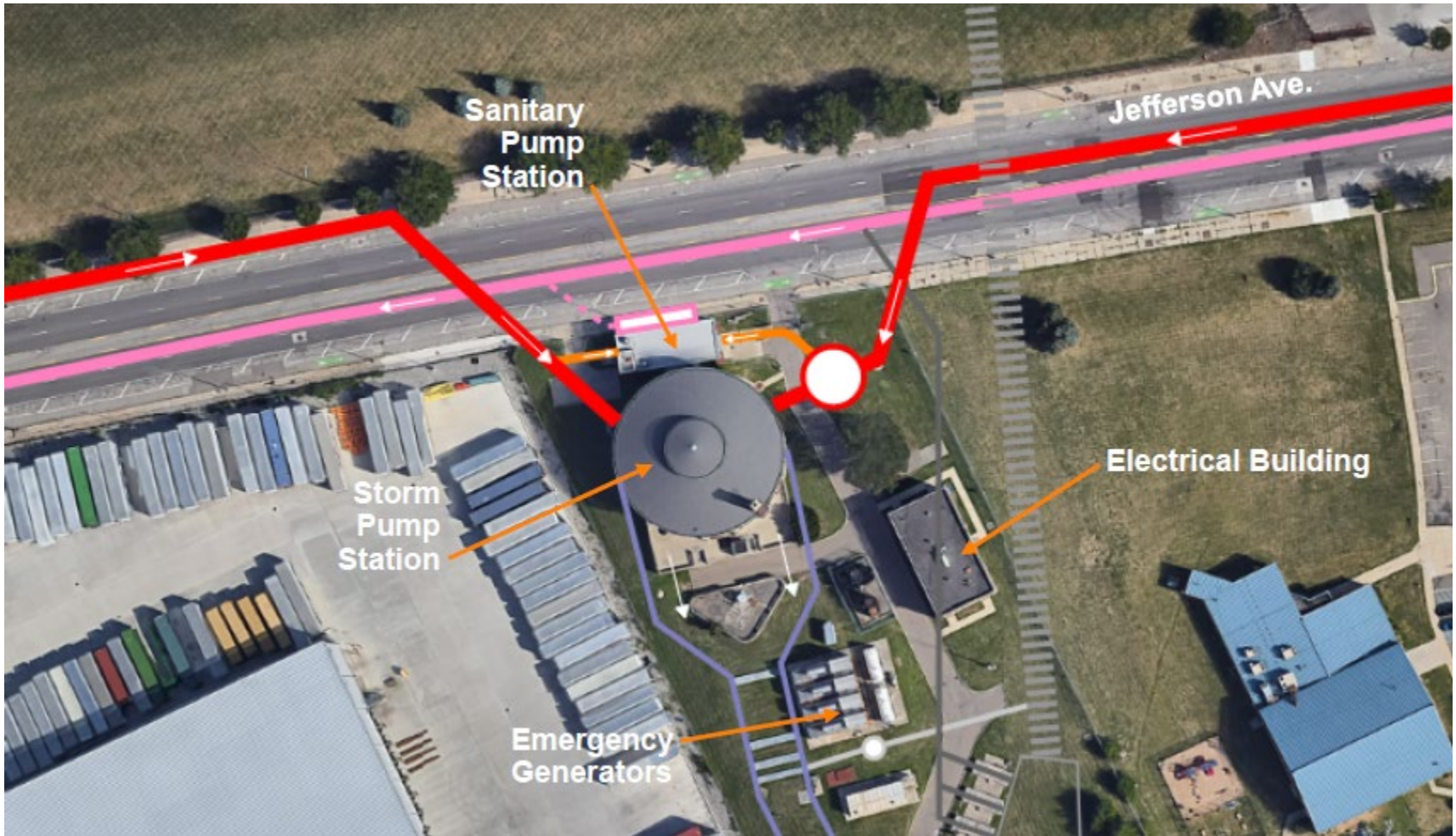
💧 Mailers

💧 Social Media

A dynamic splash of water in shades of blue, with bubbles and ripples, set against a light blue background. The water is captured in motion, creating a sense of freshness and movement.

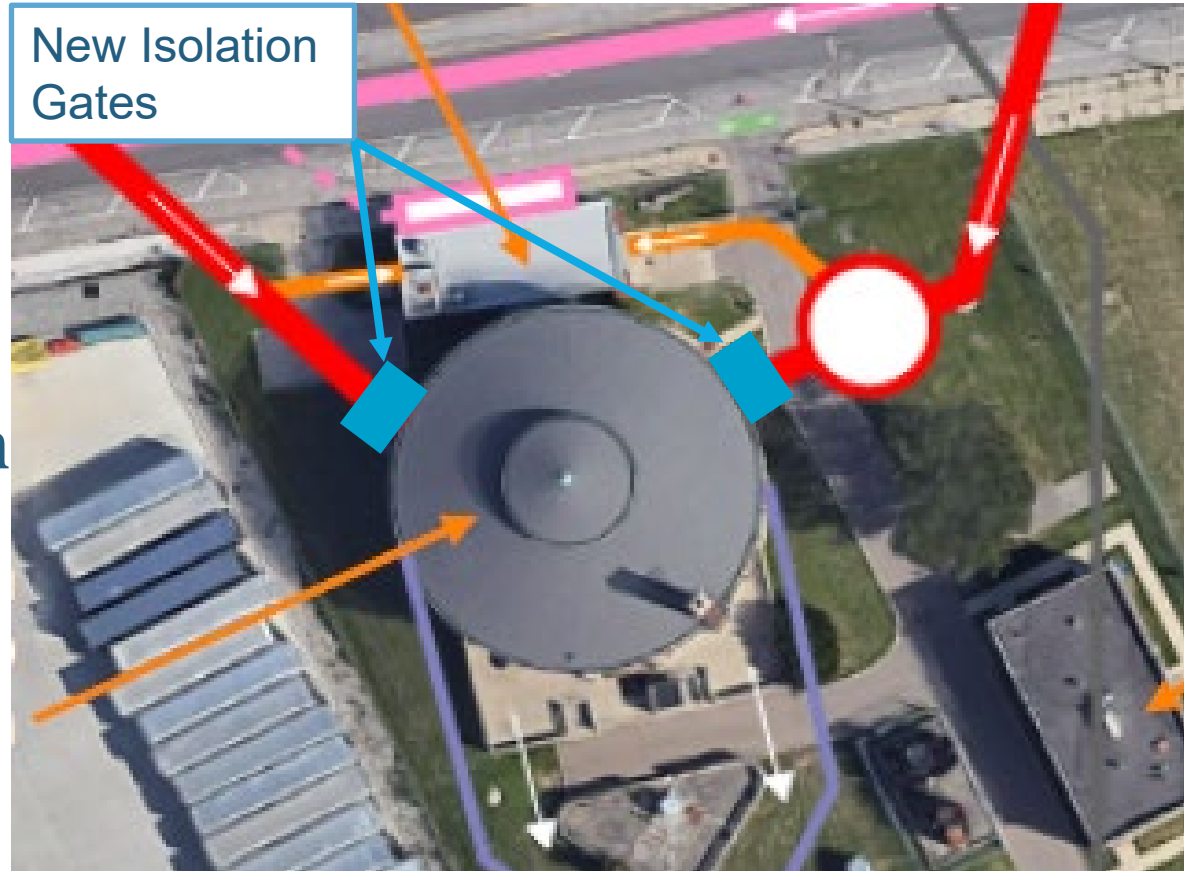
Conner Creek Improvements

System Background



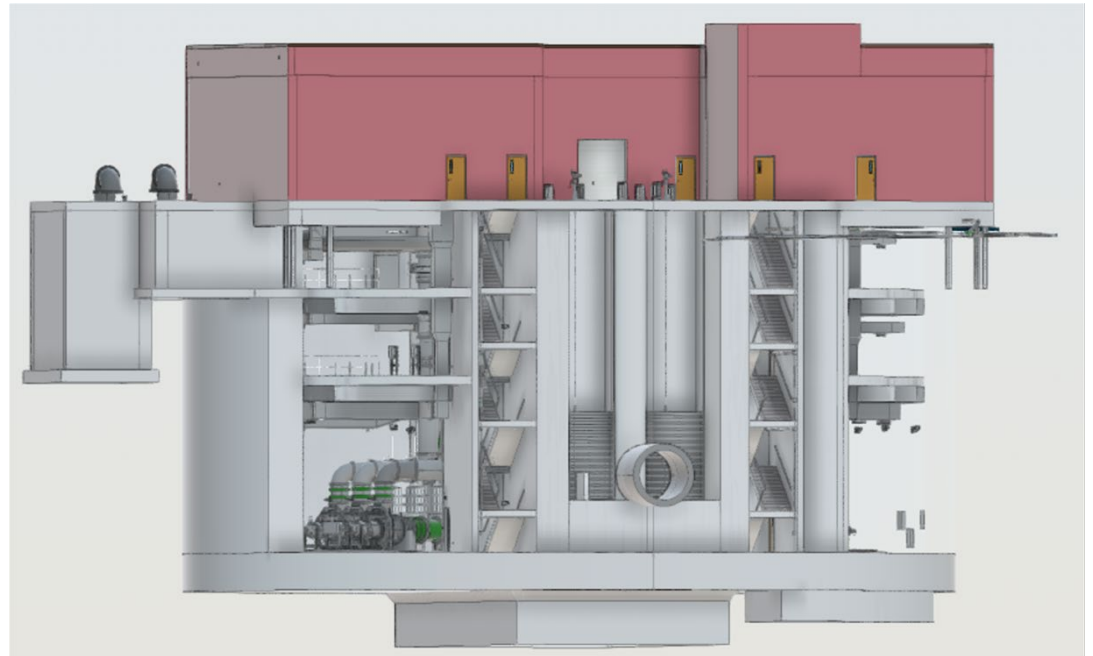
Improvements to the Storm Station

- Isolation Gate Installation
 - East Jefferson Relief Sewer
 - West Jefferson Relief Sewer
- Storm Pump Replacements



Why is GLWA proposing a new Sanitary Pump Station?

- 💧 Improve Reliability
 - 💧 Cleaning
 - 💧 Inspection
 - 💧 Maintenance
- 💧 Existing Limitations
- 💧 160 MGD Firm Capacity
 - 💧 53 MGD Average Flow
 - 💧 148 MGD Peak Flow
- 💧 N+2 Configuration



Why is GLWA proposing a new Sanitary Pump Station?



Why is GLWA proposing a new Sanitary Pump Station?



What's next?

- 💧 Quarterly Meetings
 - 💧 Combined?
 - 💧 Separate?
- 💧 Additional Meetings
 - 💧 District 4
 - 💧 Councilmember Johnson
 - 💧 Community Advisory Council
 - 💧 Department of Neighborhoods
- 💧 Preliminary Plan Review
- 💧 Exterior Design



A dynamic background image of water splashing, with a central horizontal band of semi-transparent blue. The word "Questions" is centered in white text within this band.

Questions