



Freud Sanitary Pump Station Improvement Project Community Engagement Meeting

The Great Lakes Water Authority (GLWA) will be hosting a Community Engagement Meeting for the new Freud Sanitary Pump Station Improvement Project.

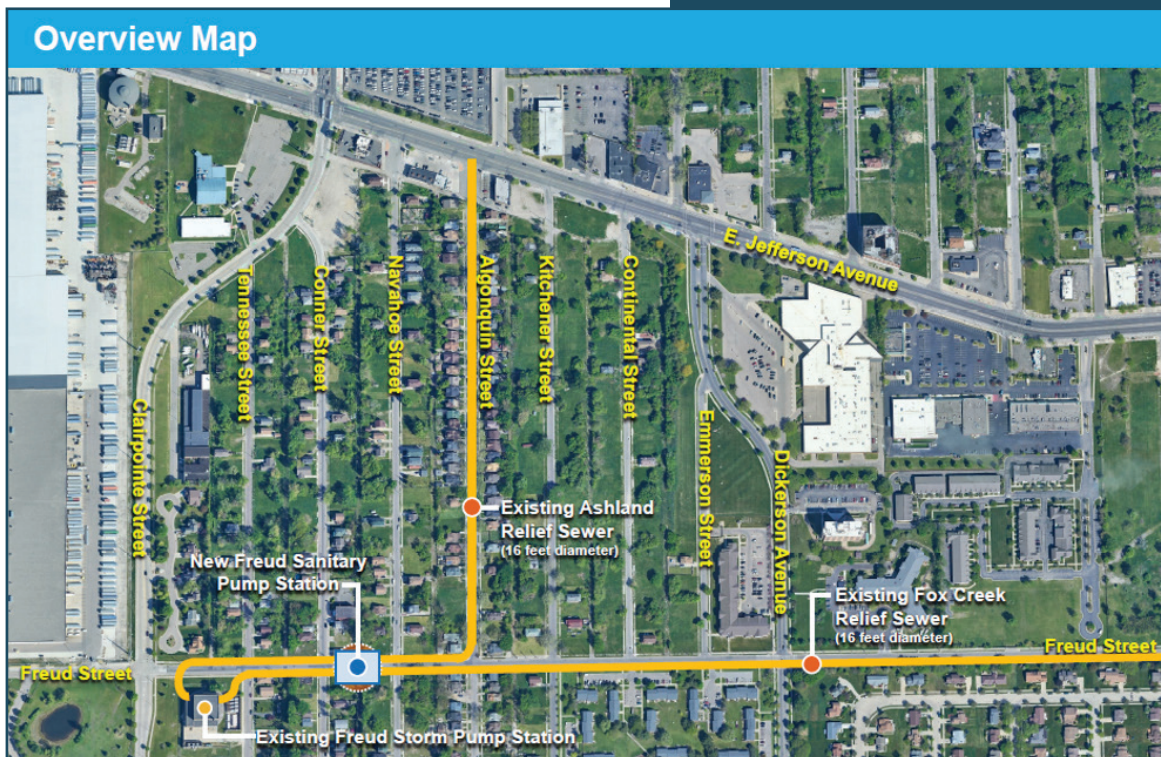
Please join the GLWA Project Team to hear more about the construction of the new Freud Sanitary Pump Station located on Freud Street (between Conner & Navahoe) in the Jefferson Chalmers neighborhood as shown in the Overview Map.

Wednesday, April 9th

6:00 - 8:00 PM

Meeting Location:

Eastlake Baptist Church
12400 E. Jefferson Ave.
Detroit, MI 48215



A recording will be made available following the meeting.
For more information about the project, visit glwater.org/freud-sanitary-pump-station
or scan the QR code below.

