



Freud Sanitary Pump Station

12/11/24

Agenda

◆ Freud Improvements

- ◆ System Background
- ◆ Why is GLWA proposing a Sanitary Pump Station?
- ◆ Why was the location chosen?
- ◆ Why will Freud be rerouted?

◆ Project Progress

- ◆ Where are we at?
- ◆ What's next?
 - ◆ Construction
 - ◆ Exterior Design
 - ◆ Quarterly Meetings
 - ◆ Communication

◆ Conner Creek Improvements

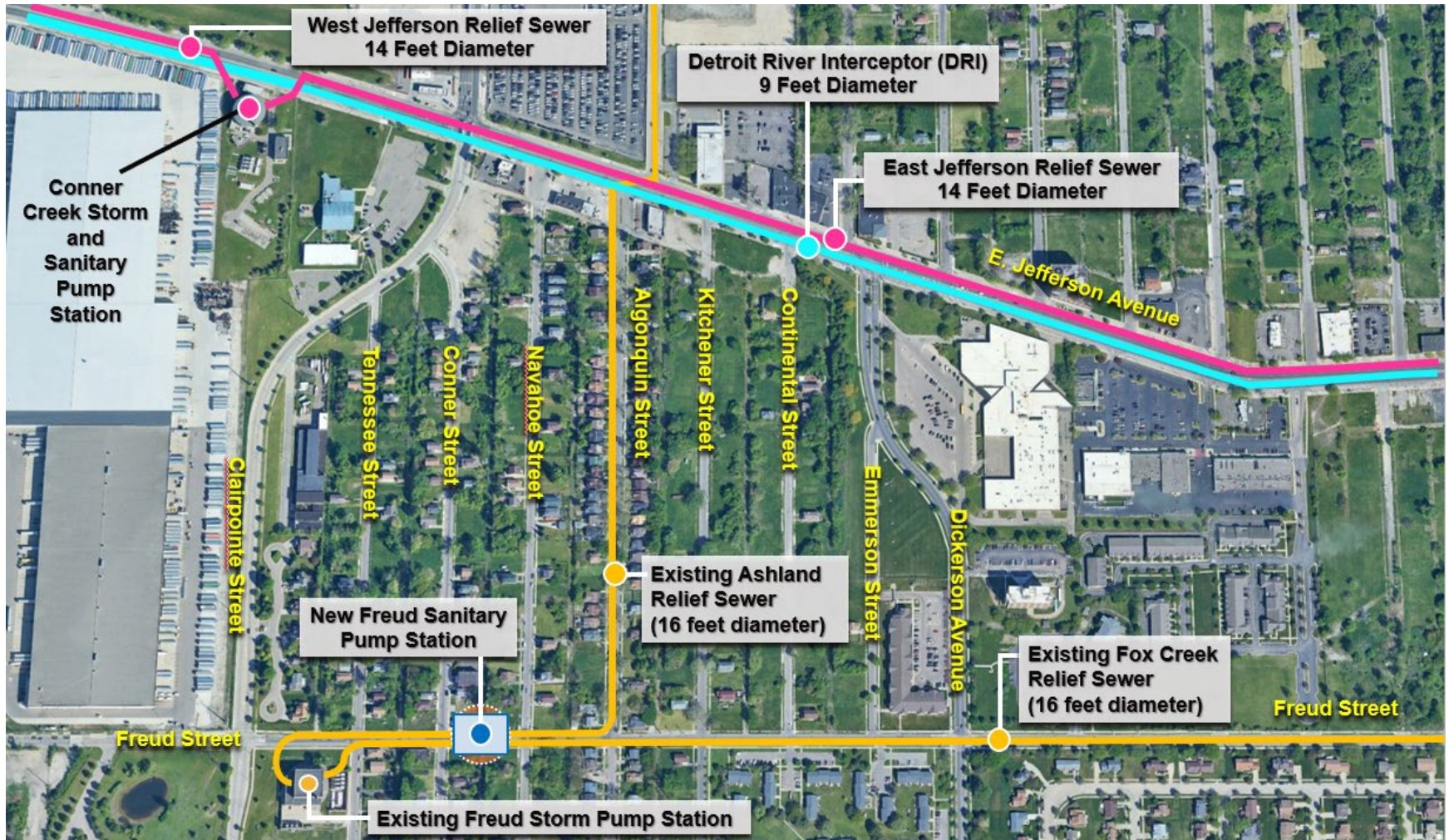
- ◆ System Background
- ◆ Improvements to the Storm Station
- ◆ Why is GLWA proposing a Sanitary Pump Station?

◆ Questions

A dynamic splash of clear water against a light blue background, with a semi-transparent blue horizontal band across the middle.

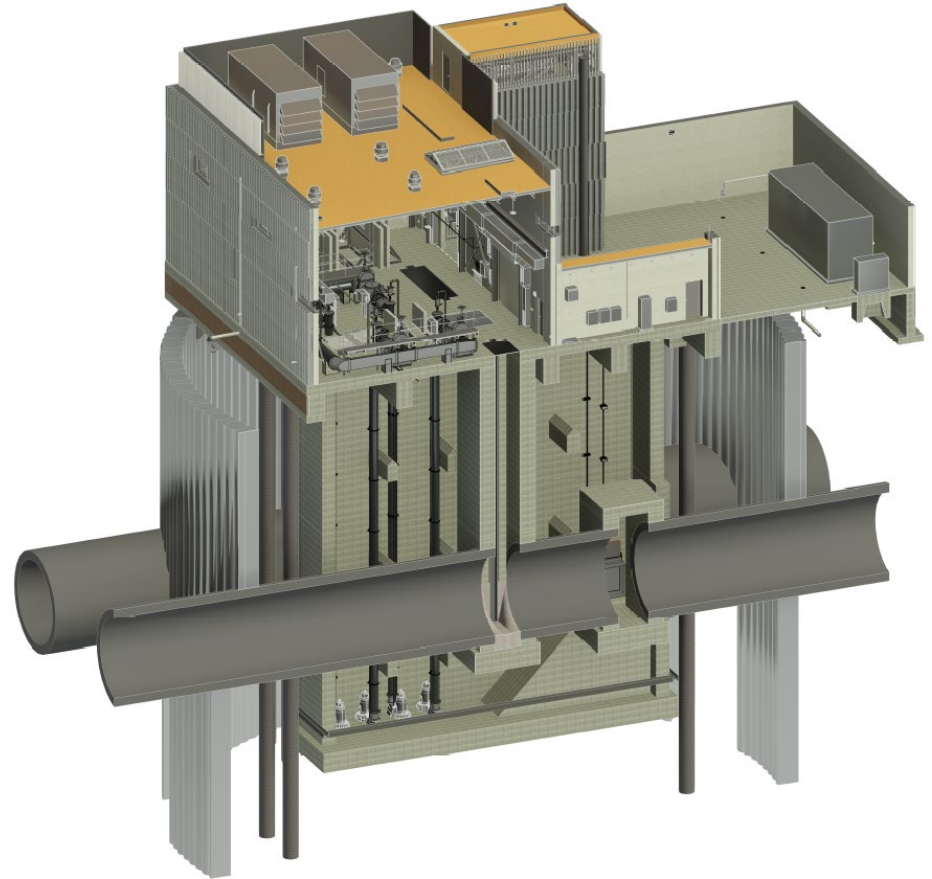
Freud Improvements

System Background

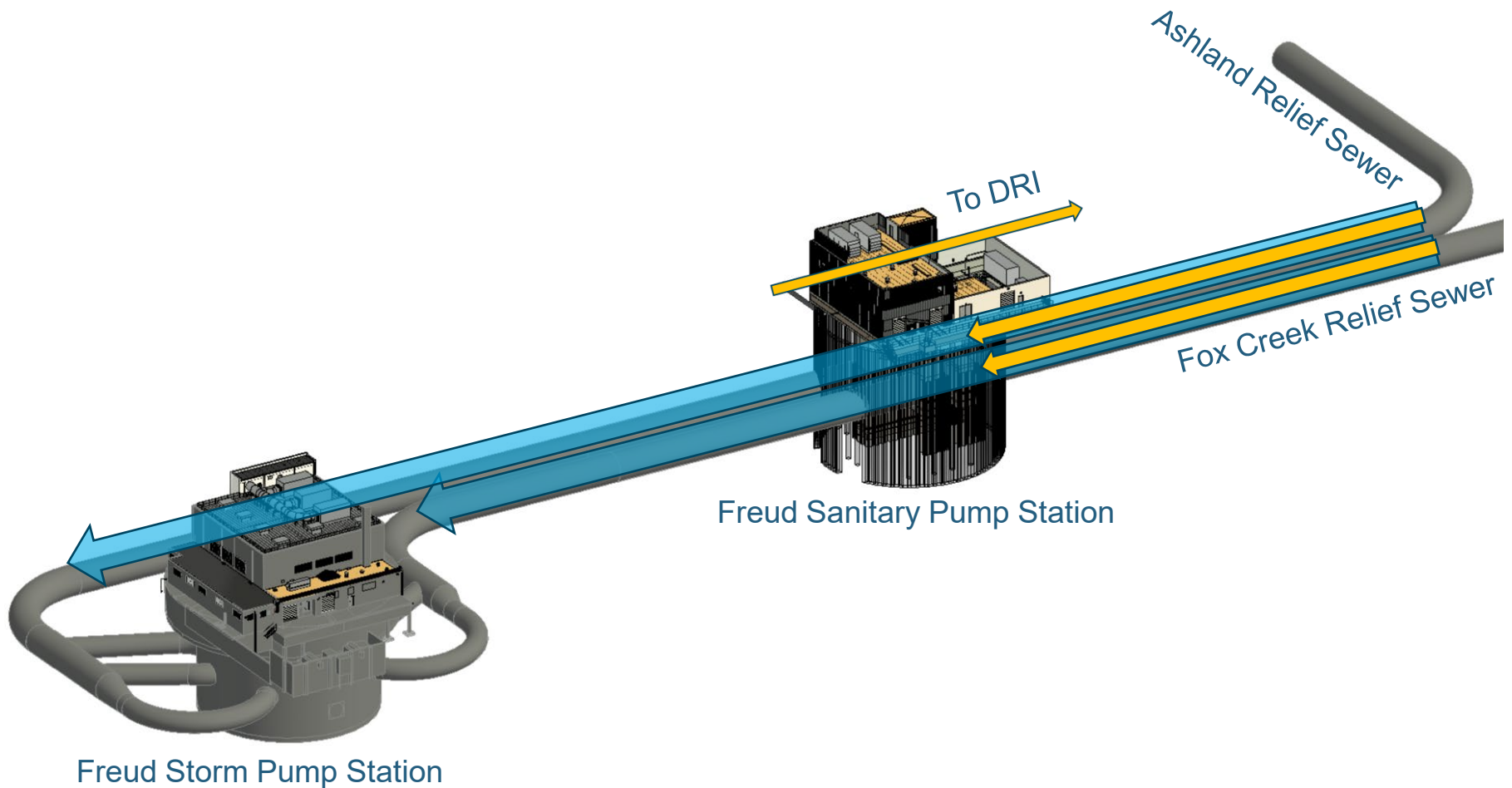


Why is GLWA proposing a Sanitary Pump Station?

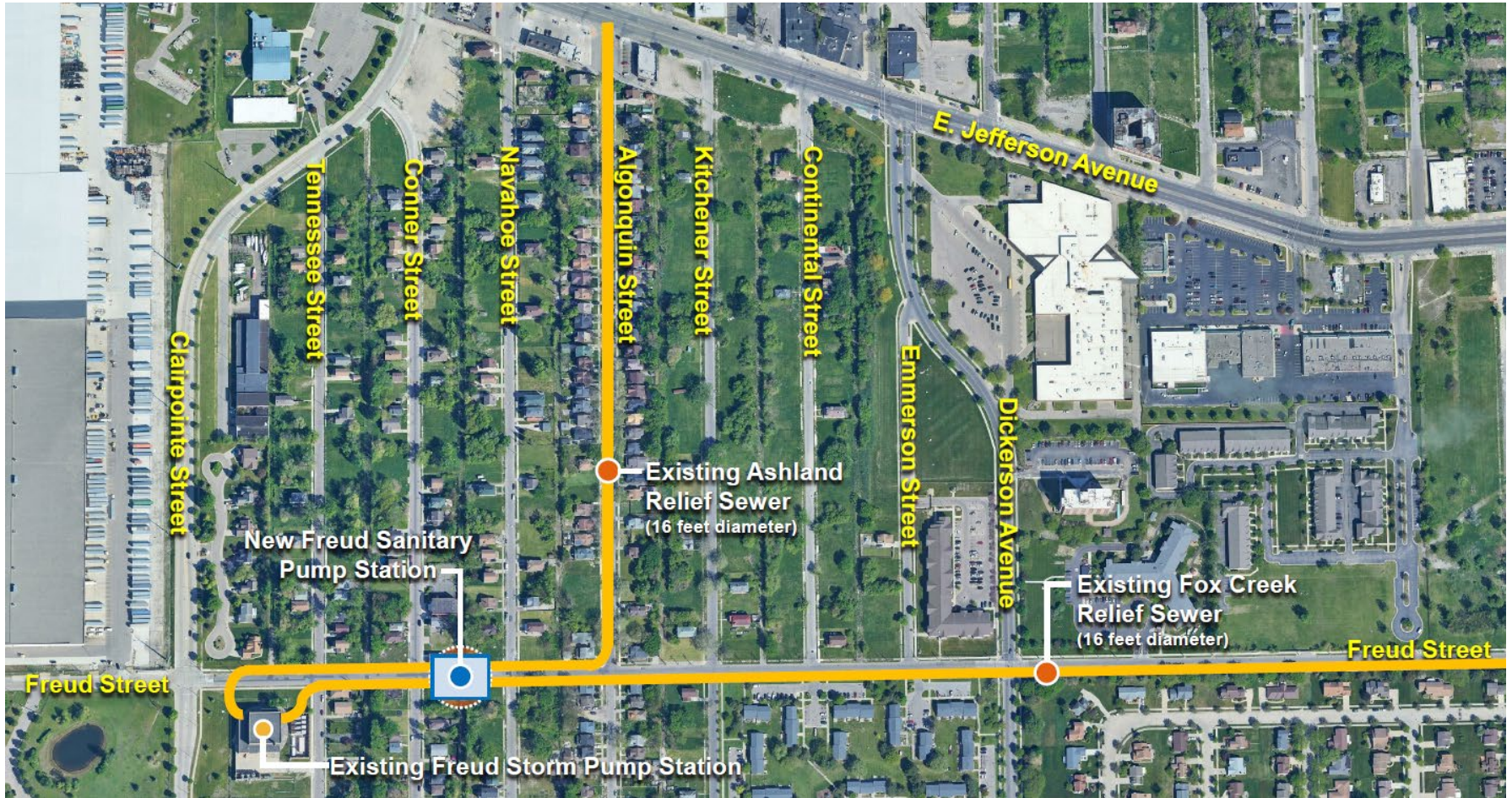
- 💧 Improve the Reliability of Freud Storm Pump Station
 - 💧 Cleaning
 - 💧 Inspection
 - 💧 Maintenance
 - 💧 Rehabilitation
- 💧 Maximize GLWA's ability to keep sewer water levels low during rain events
- 💧 Help prevent basement backups



Why is GLWA proposing a Sanitary Pump Station?



Why was the location chosen?



Why will Freud be rerouted?

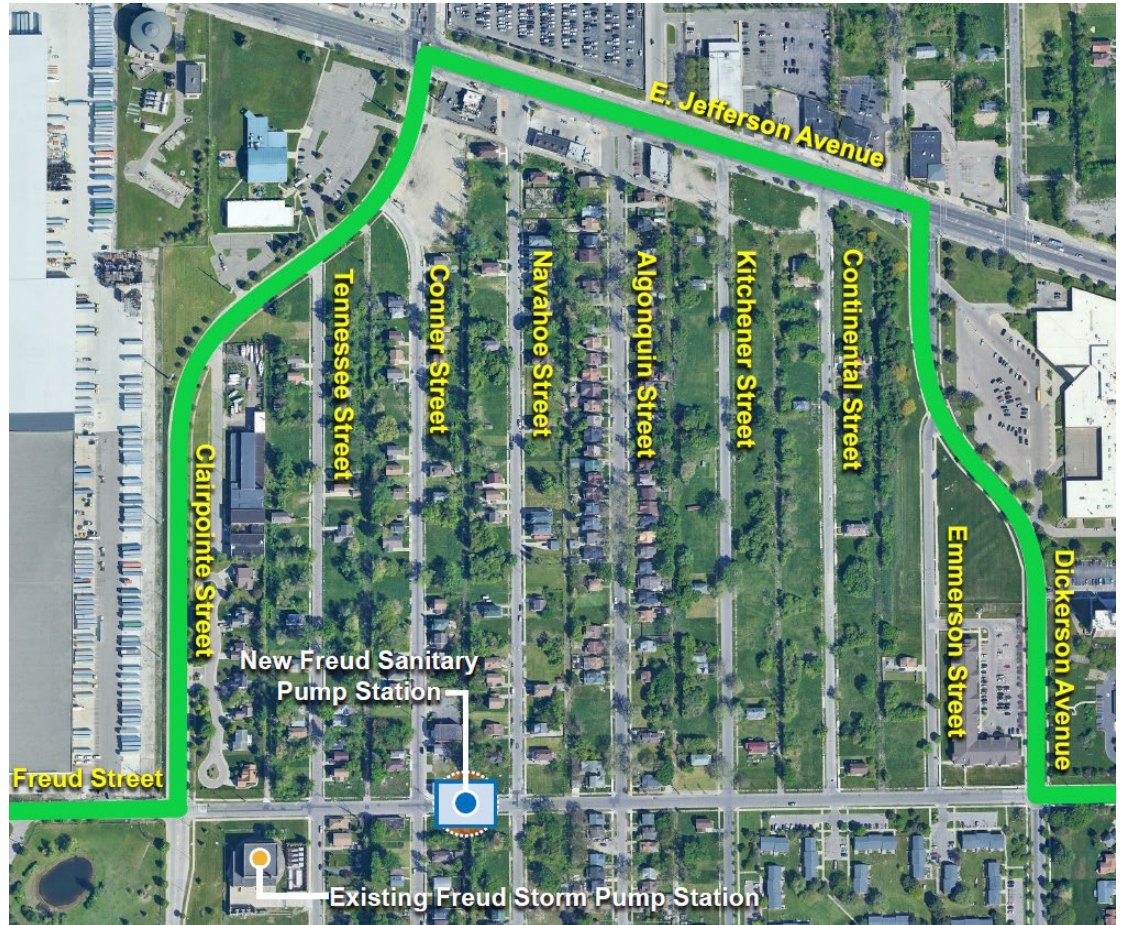


A dynamic background image of water splashing, with a central horizontal band of semi-transparent blue. The water is captured in motion, with droplets and bubbles visible throughout.

Project Progress

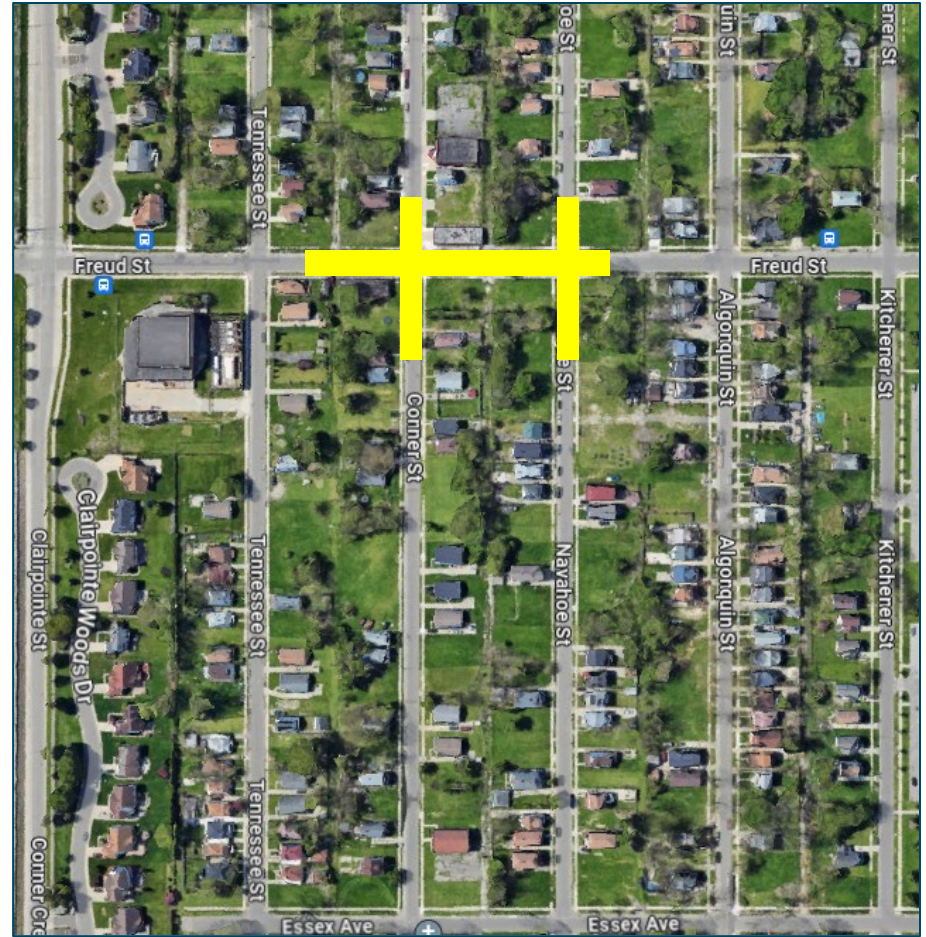
Where are we at?

- 💧 Site Clearing
- 💧 Abatement
- 💧 Structure Removal
- 💧 Traffic Study
- 💧 Utility Relocation
 - 💧 DTE-Gas
 - 💧 DTE-Electric
- 💧 Rezoning



What's next? – Construction

- 💧 Utility Relocation
 - 💧 Sewer
 - 💧 Water
 - 💧 Communication
- 💧 Freud Street Closure
 - 💧 Mailers
 - 💧 Social Media
- 💧 Freud Sanitary Station
- 💧 Freud Storm Station



What's next? – Exterior Design



What's next? – Exterior Design



What's next? – Exterior Design

Options

Color

Additional Windows



What's next? – Quarterly Meetings



The Great Lakes Water Authority (GLWA) will be hosting Quarterly Community Engagement Meetings for the new Freud Sanitary Pump Station Improvement Project.

Please join the GLWA Project Team to hear more about the construction of the new Freud Sanitary Pump Station located on Freud Street (between Conner & Navahoe) in the Jefferson Chalmers neighborhood as shown in the Overview Map in the below right corner.

For additional information, including FAQs, presentations, and project contact information, GLWA has established a project website that can be found by using this QR code.



glwater.org/freud-sanitary-pump-station

Meeting Dates & Time:

5:30 – 7:30 pm

12/11/24

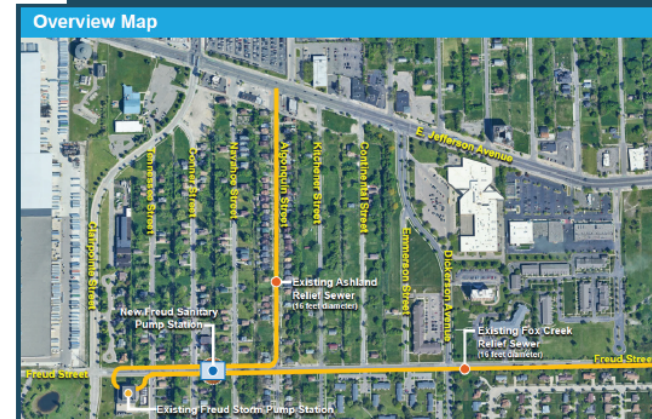
03/19/25

05/21/25

09/17/25


Meeting Location:

Eastlake Baptist Church
12400 E. Jefferson Ave.
Detroit, MI 48215



What's next? - Communication

💧 Website - www.glwater.org/freud-sanitary-pump-station

💧 QR Code - 

💧 Email - freudsanitarypumpstation@glwater.org

💧 Phone

💧 GLWA - (313) 822-7007

💧 Kokosing - (313) 960-7687

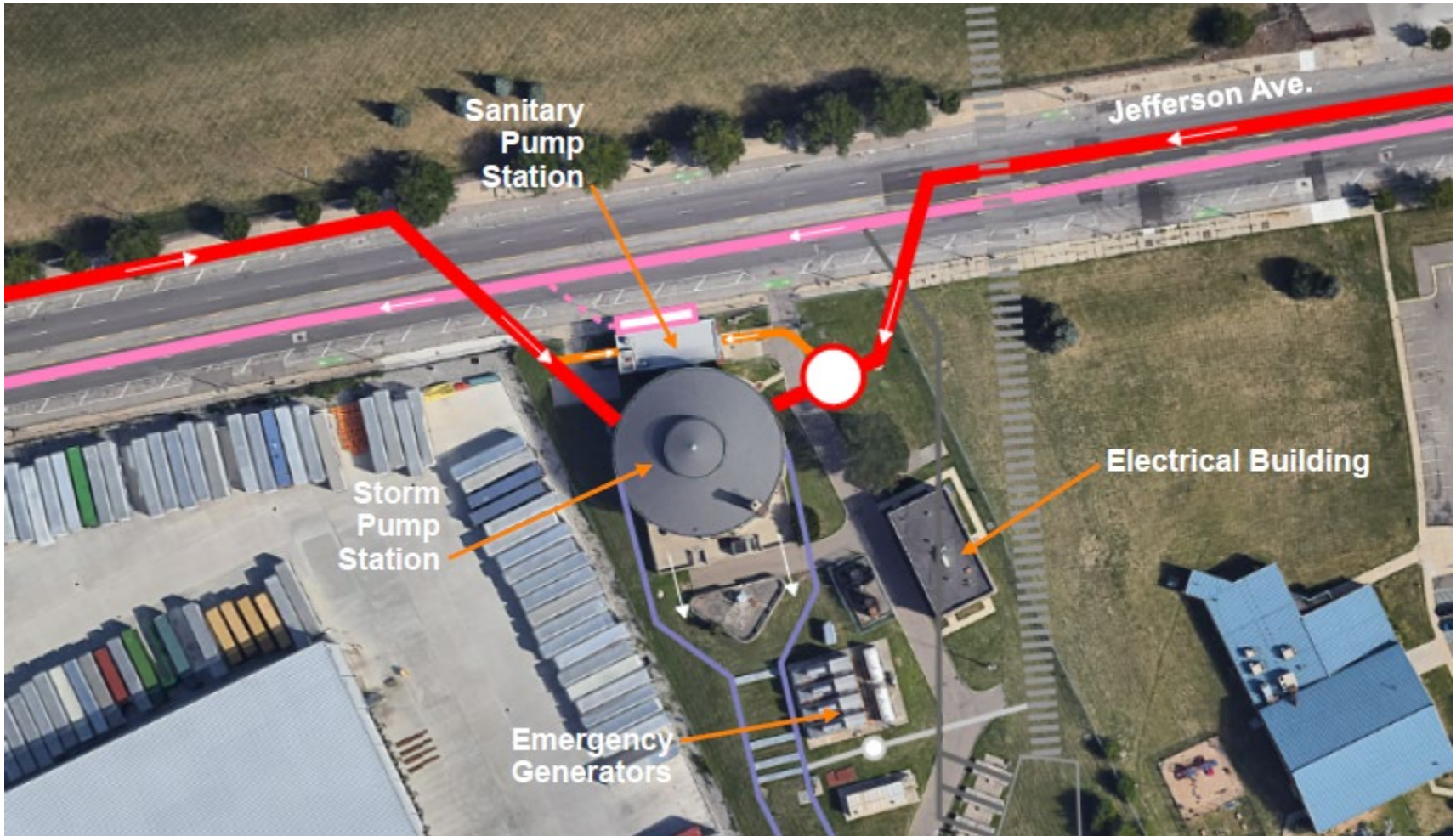
💧 Mailers

💧 Social Media

A dynamic background image showing a splash of clear water against a light blue sky. The water is captured in mid-air, with numerous droplets and bubbles visible. A semi-transparent blue horizontal band is overlaid across the middle of the image, serving as a background for the title text.

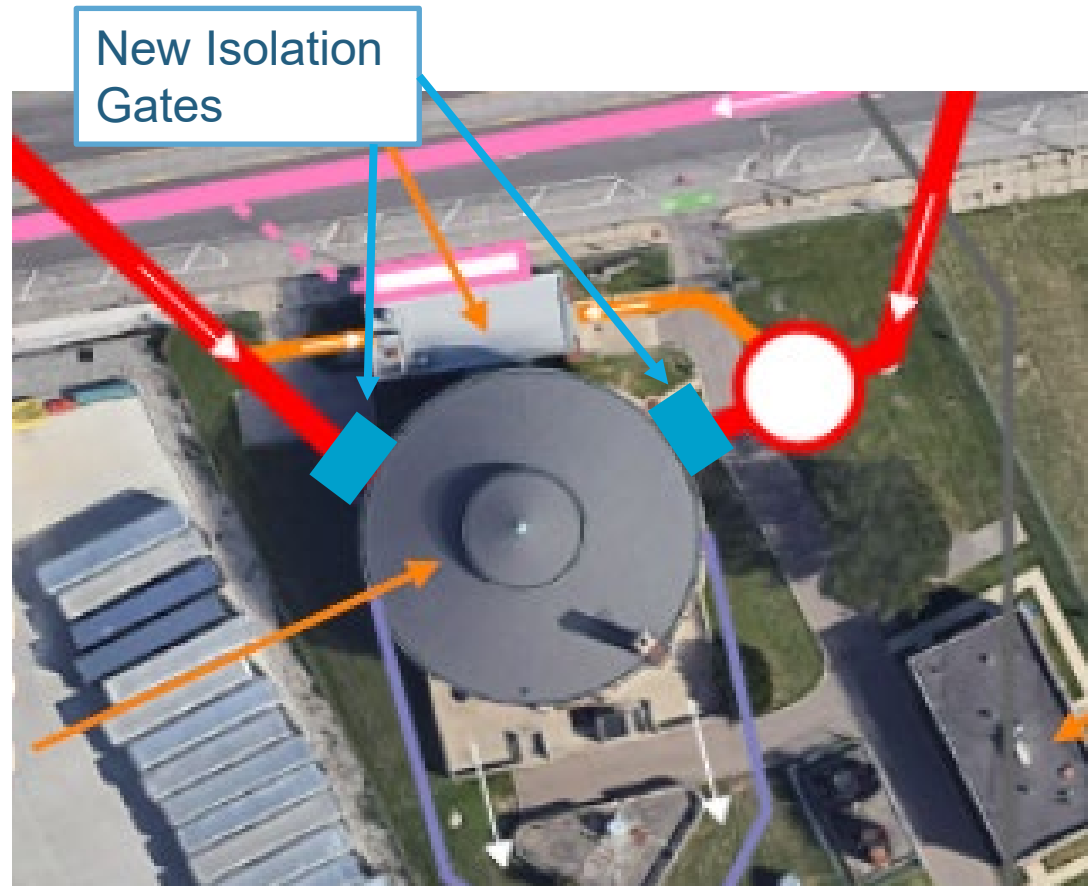
Conner Creek Improvements

System Background

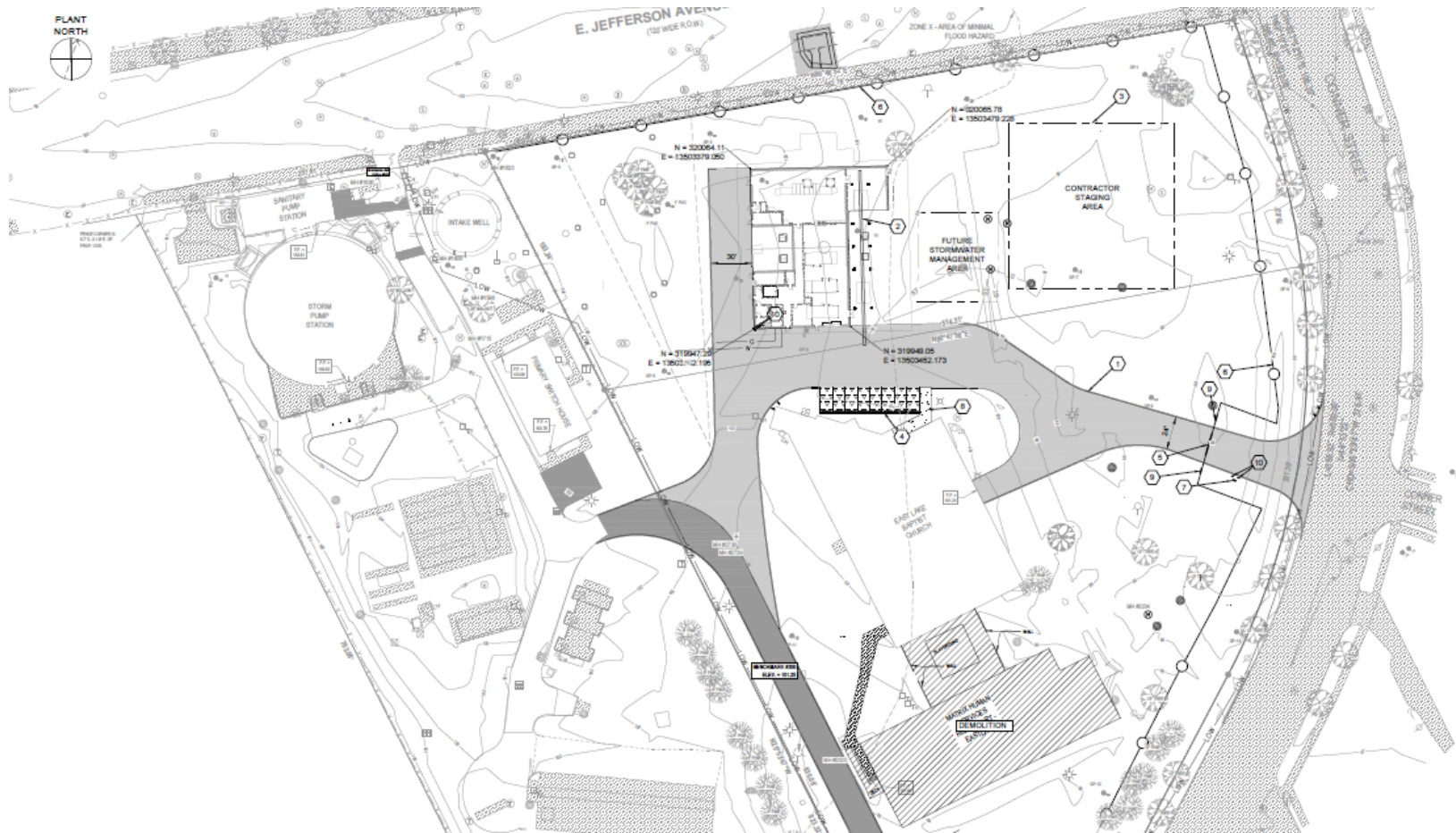


Improvements to the Storm Station

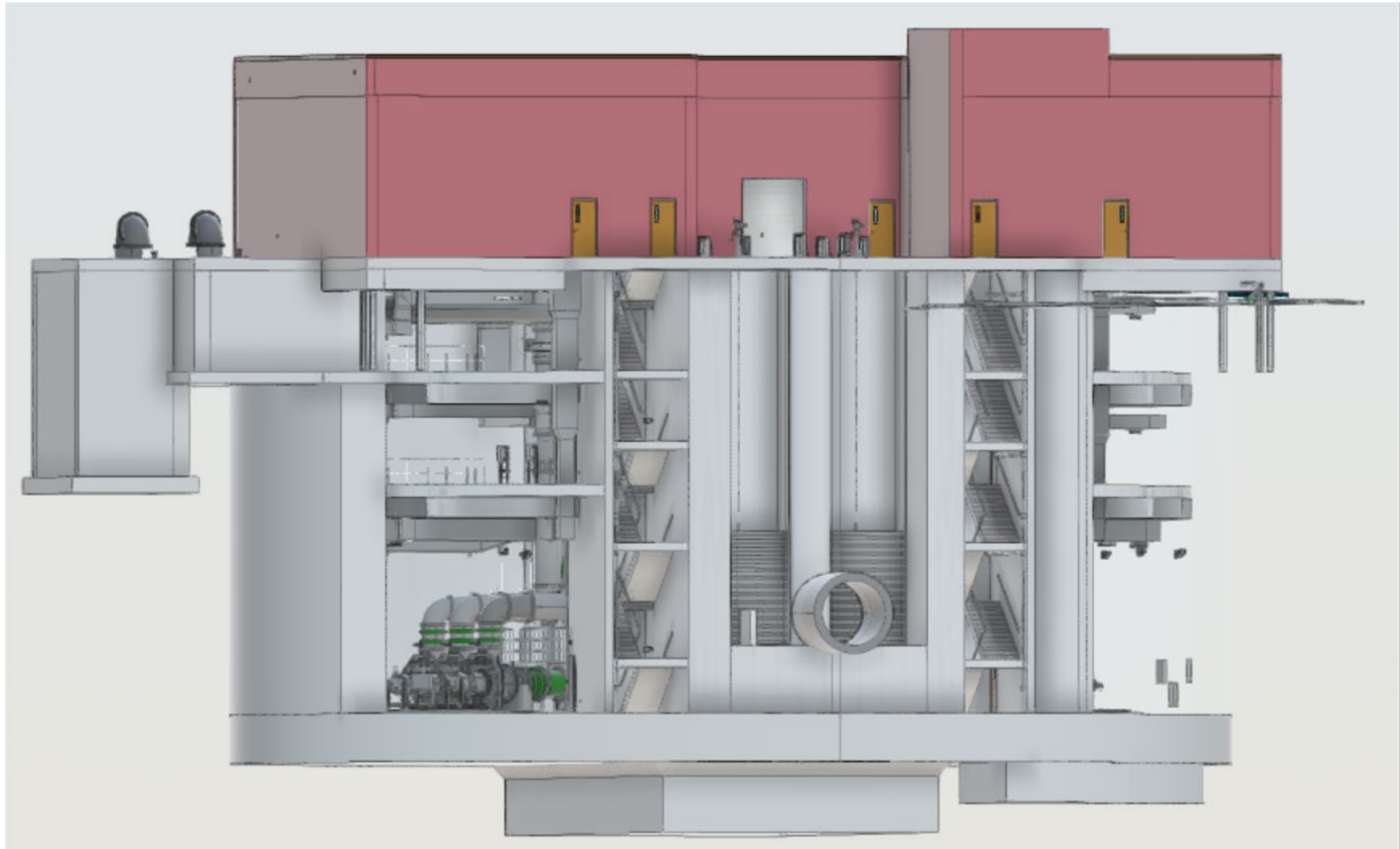
- 💧 Isolation Gate Installation
- 💧 Storm Pump Replacements



Why is GLWA proposing a Sanitary Pump Station?



Why is GLWA proposing a Sanitary Pump Station?



A dynamic splash of water in shades of blue, with bubbles and ripples, set against a light blue background. The water is captured in motion, creating a sense of freshness and movement.

Questions