



Proposed Freud Sanitary Pump Station

11/21/24

Agenda

- 💧 System Background
- 💧 Project Background
- 💧 Why is GLWA proposing a Sanitary Pump Station?
- 💧 Why was the location chosen?
- 💧 Why will Freud be rerouted?
- 💧 Why is the building this size?
- 💧 What parcels were purchased?
- 💧 Community Engagement
- 💧 Questions

System Background

Conners Pump Station

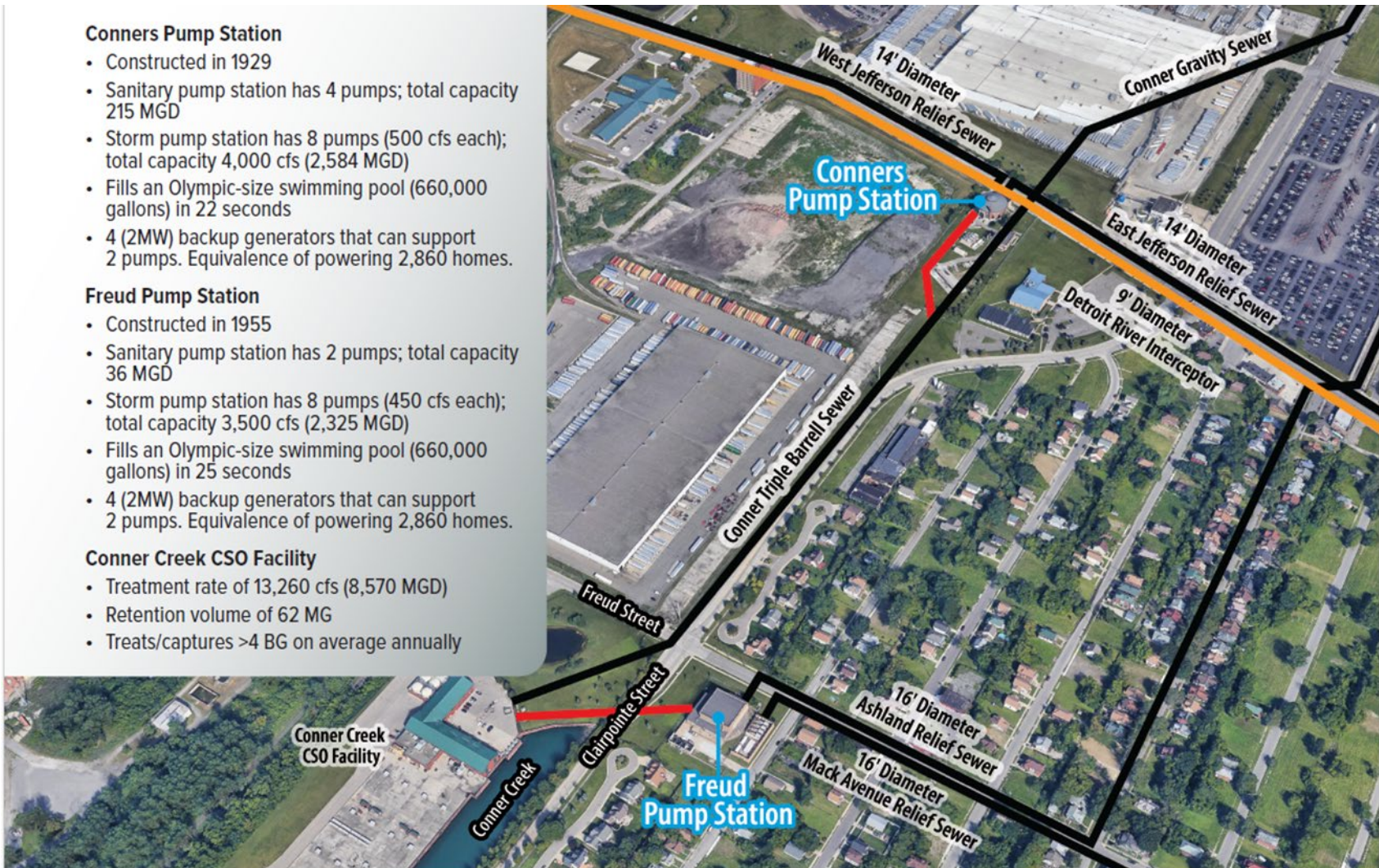
- Constructed in 1929
- Sanitary pump station has 4 pumps; total capacity 215 MGD
- Storm pump station has 8 pumps (500 cfs each); total capacity 4,000 cfs (2,584 MGD)
- Fills an Olympic-size swimming pool (660,000 gallons) in 22 seconds
- 4 (2MW) backup generators that can support 2 pumps. Equivalence of powering 2,860 homes.

Freud Pump Station

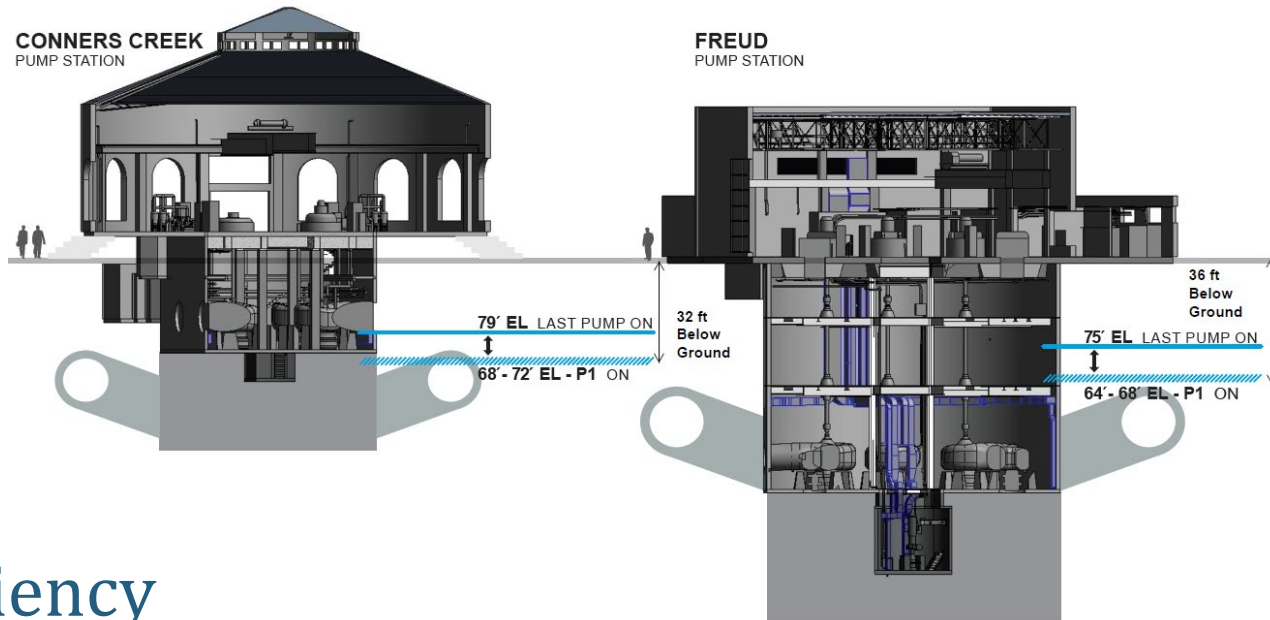
- Constructed in 1955
- Sanitary pump station has 2 pumps; total capacity 36 MGD
- Storm pump station has 8 pumps (450 cfs each); total capacity 3,500 cfs (2,325 MGD)
- Fills an Olympic-size swimming pool (660,000 gallons) in 25 seconds
- 4 (2MW) backup generators that can support 2 pumps. Equivalence of powering 2,860 homes.

Conner Creek CSO Facility

- Treatment rate of 13,260 cfs (8,570 MGD)
- Retention volume of 62 MG
- Treats/captures >4 BG on average annually



Project Background

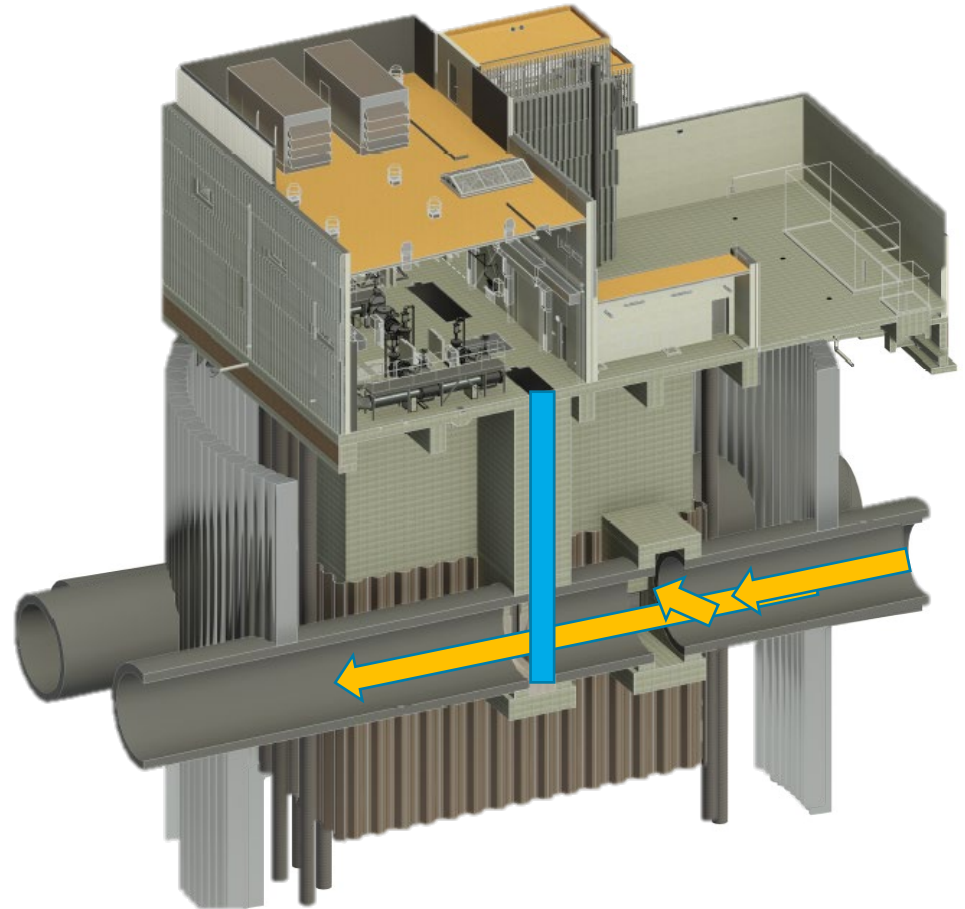


Resiliency

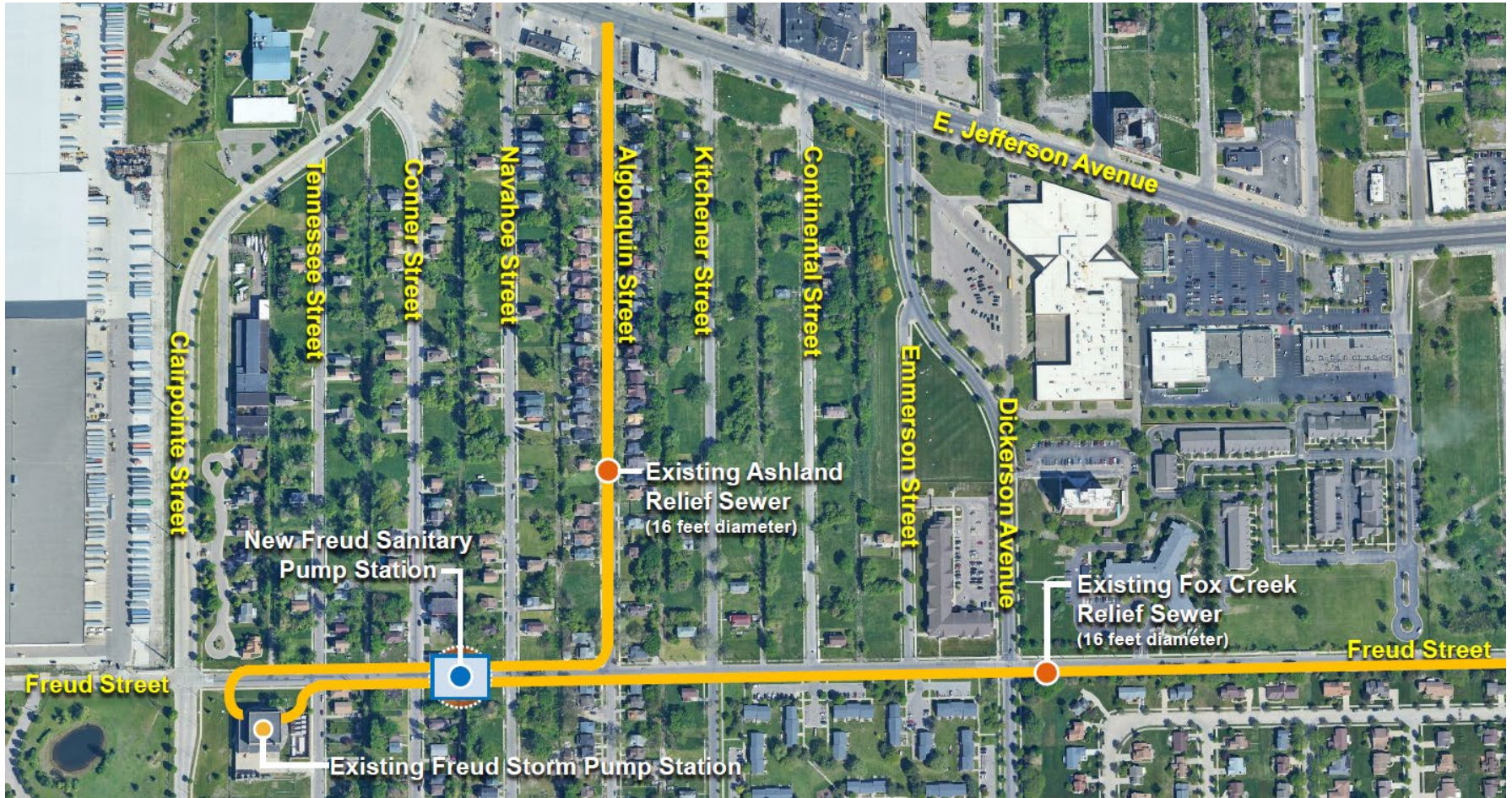
- Power Monitoring and Reliability
- System Access for Routine Maintenance
- Mechanical Upgrades

Why is GLWA proposing a Sanitary Pump Station?

- 💧 Improve the Reliability of Freud Storm Pump Station
 - 💧 Cleaning
 - 💧 Inspection
 - 💧 Maintenance
 - 💧 Rehabilitation
- 💧 Maximize GLWA's ability to keep sewer water levels low during rain events
- 💧 Help prevent basement backups



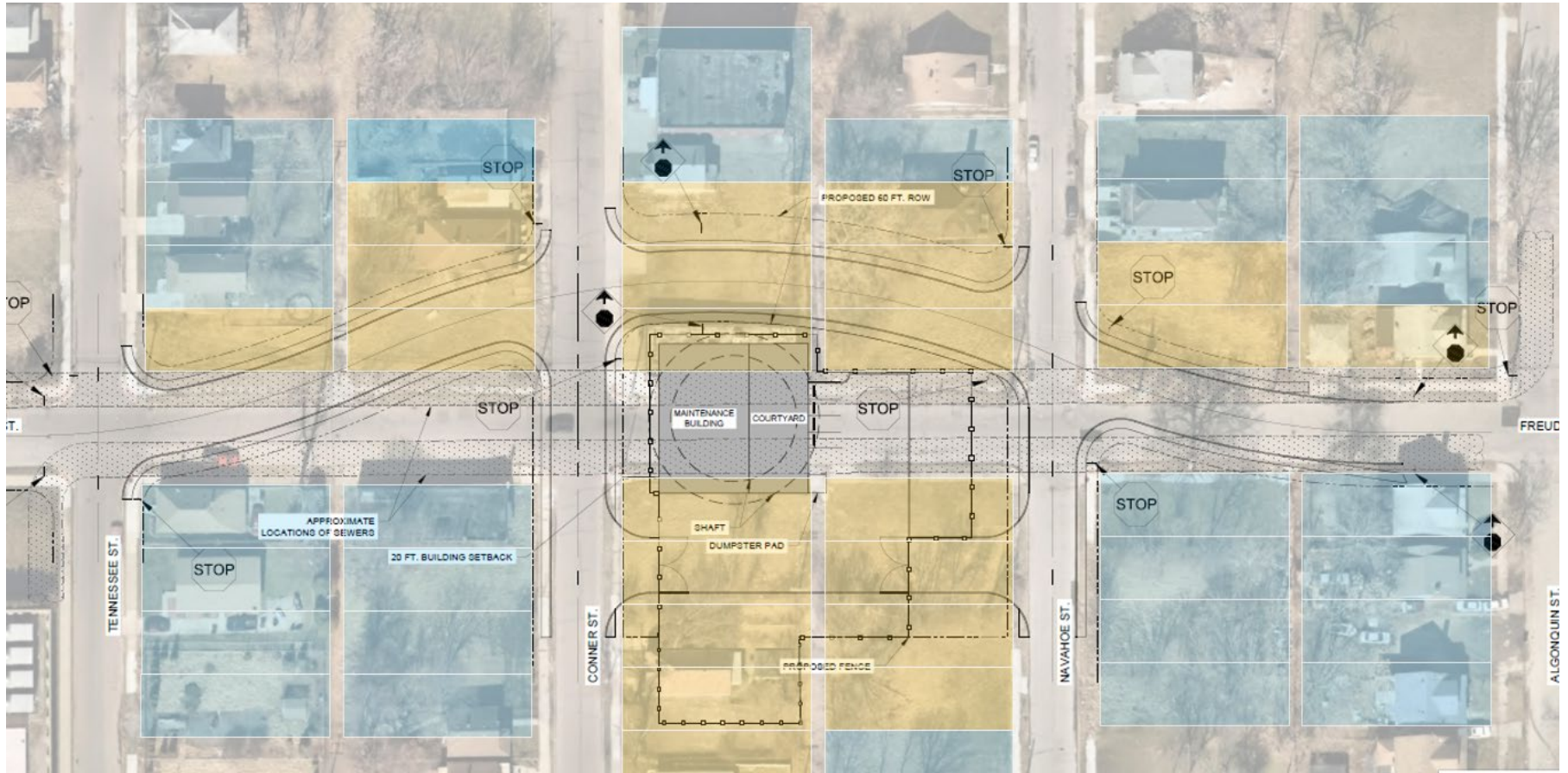
Why was the location chosen?



Why will Freud be rerouted?



What parcels were purchased?



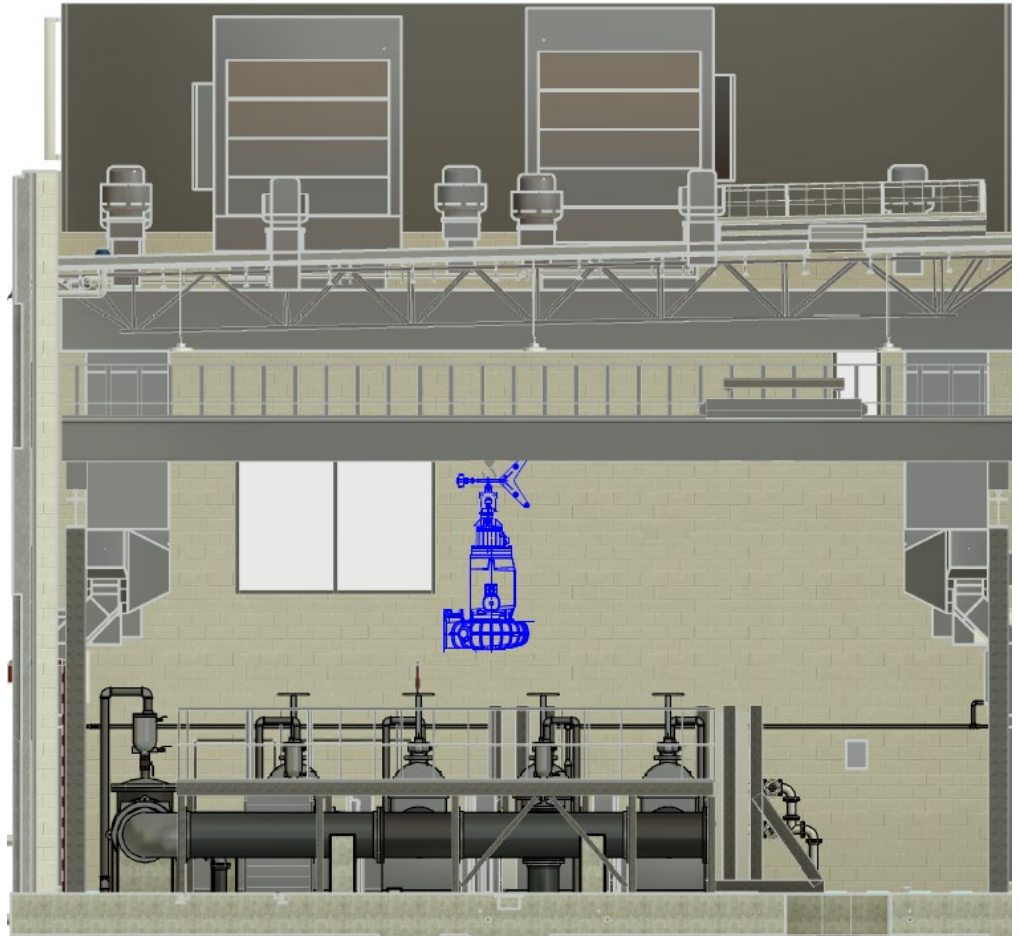
Why is the building this size?

◆ Contain Operations

◆ Crane

◆ Noise

◆ Odor



Community Engagement



The Great Lakes Water Authority (GLWA) will be hosting Quarterly Community Engagement Meetings for the new Freud Sanitary Pump Station Improvement Project.

Please join the GLWA Project Team to hear more about the construction of the new Freud Sanitary Pump Station located on Freud Street (between Conner & Navahoe) in the Jefferson Chalmers neighborhood as shown in the Overview Map in the below right corner.

For additional information, including FAQs, presentations, and project contact information, GLWA has established a project website that can be found by using this QR code.



glwater.org/freud-sanitary-pump-station

Meeting Dates & Time:

5:30 – 7:30 pm

12/11/24

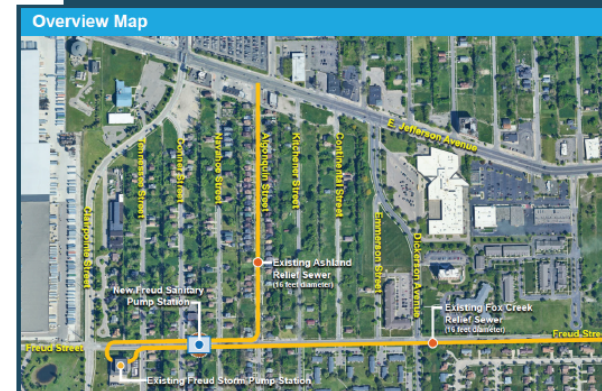
03/19/25

05/21/25

09/17/25

Meeting Location:

Eastlake Baptist Church
12400 E. Jefferson Ave.
Detroit, MI 48215



A dynamic splash of water in shades of blue, with bubbles and ripples, set against a light blue background. The water is captured in motion, creating a sense of freshness and movement.

Questions