



**Freud Sanitary Pump Station**  
07/31/24

# Agenda

## 💧 System Operations & Requirements

- 💧 System Background

- 💧 Project Background

- 💧 Why is GLWA proposing a Sanitary Pump Station?

- 💧 Why was the location chosen?

- 💧 Why will Freud be rerouted?

- 💧 Why is the building this size?

## 💧 Project Progress

- 💧 Where are we at?

- 💧 What's next?

  - 💧 Communication

  - 💧 Pre-Construction

  - 💧 Construction

## 💧 Questions

A dynamic splash of water in shades of blue, with bubbles and ripples, set against a light blue background. The water appears to be moving from left to right, creating a sense of motion and freshness.

# System Operations & Requirements

# System Background

## Conners Pump Station

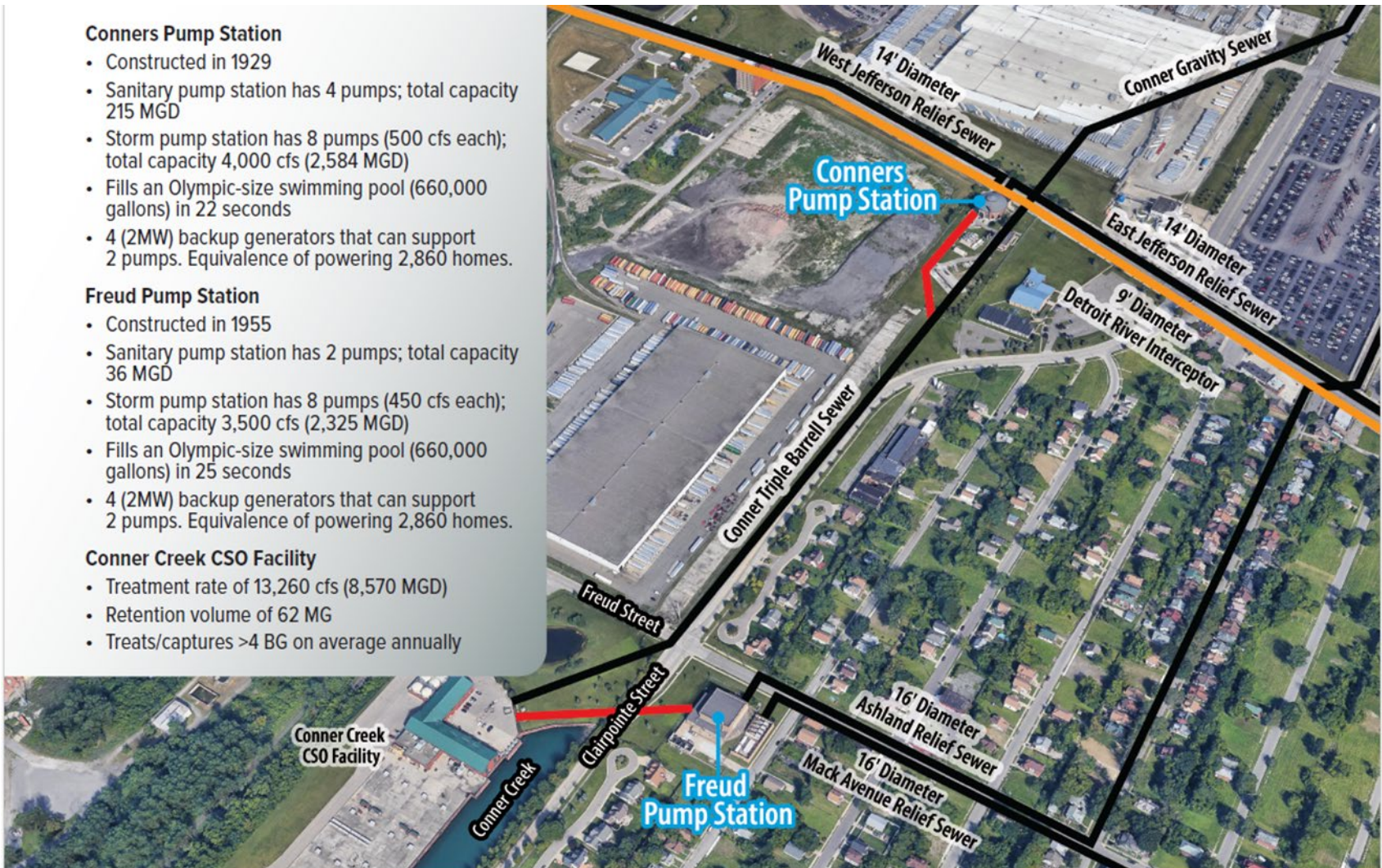
- Constructed in 1929
- Sanitary pump station has 4 pumps; total capacity 215 MGD
- Storm pump station has 8 pumps (500 cfs each); total capacity 4,000 cfs (2,584 MGD)
- Fills an Olympic-size swimming pool (660,000 gallons) in 22 seconds
- 4 (2MW) backup generators that can support 2 pumps. Equivalence of powering 2,860 homes.

## Freud Pump Station

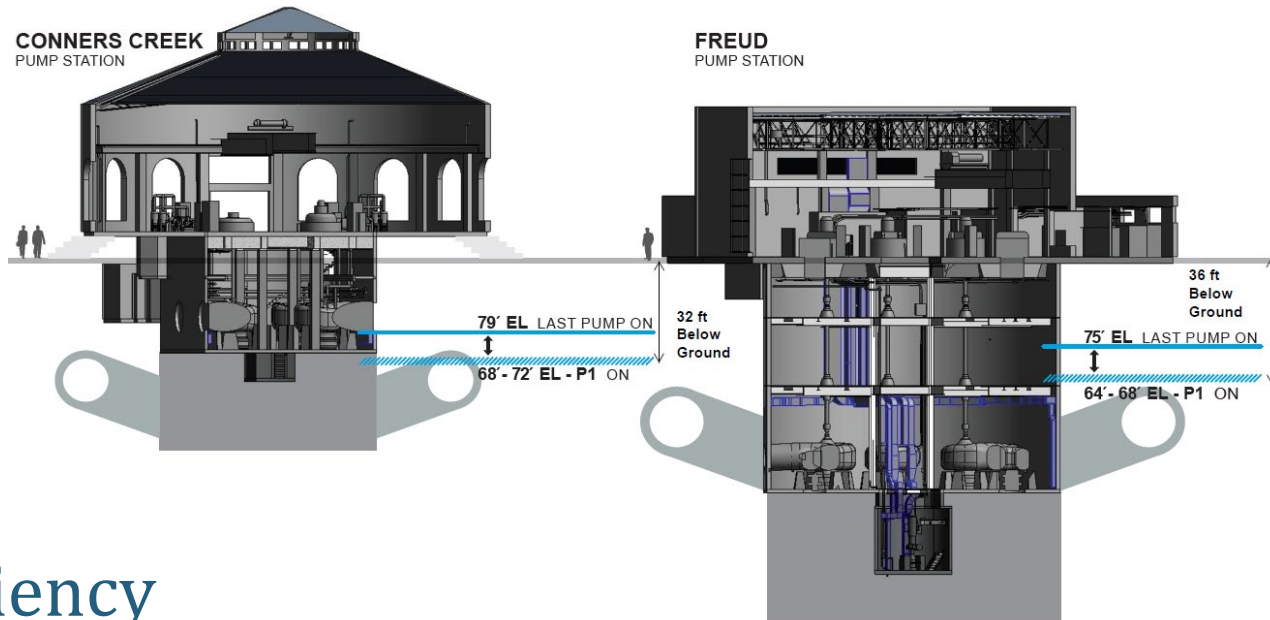
- Constructed in 1955
- Sanitary pump station has 2 pumps; total capacity 36 MGD
- Storm pump station has 8 pumps (450 cfs each); total capacity 3,500 cfs (2,325 MGD)
- Fills an Olympic-size swimming pool (660,000 gallons) in 25 seconds
- 4 (2MW) backup generators that can support 2 pumps. Equivalence of powering 2,860 homes.

## Conner Creek CSO Facility

- Treatment rate of 13,260 cfs (8,570 MGD)
- Retention volume of 62 MG
- Treats/captures >4 BG on average annually



# Project Background

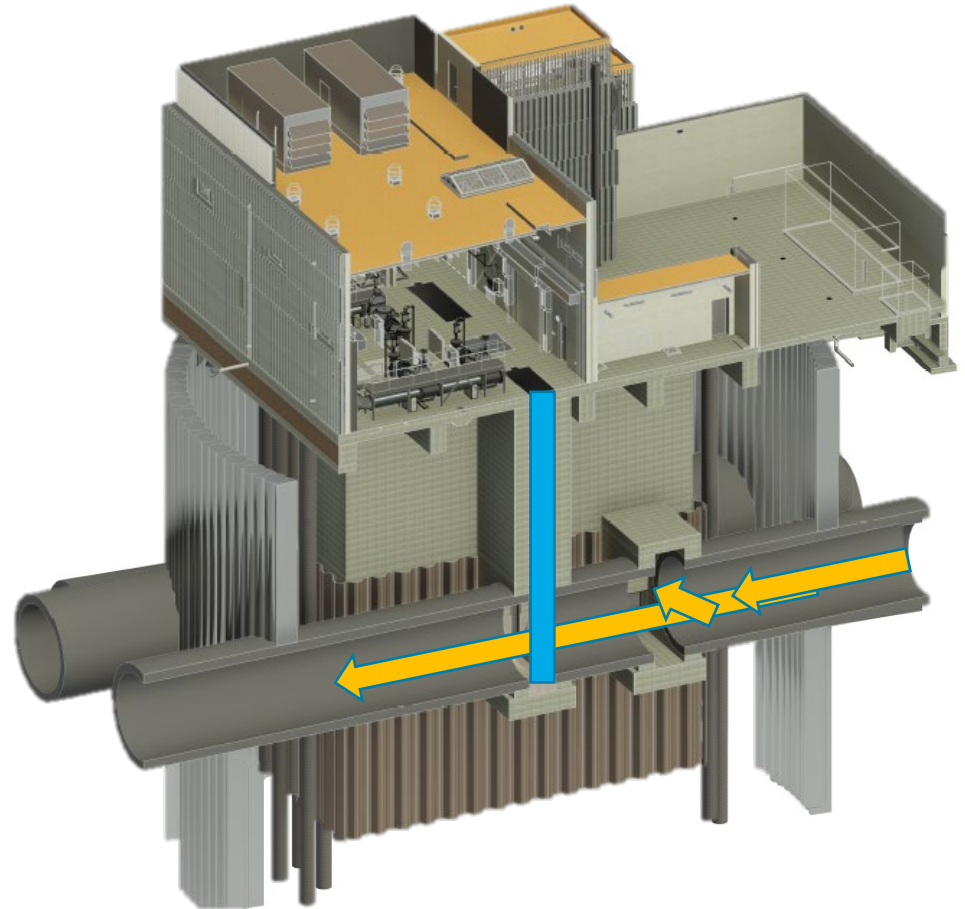


## Resiliency

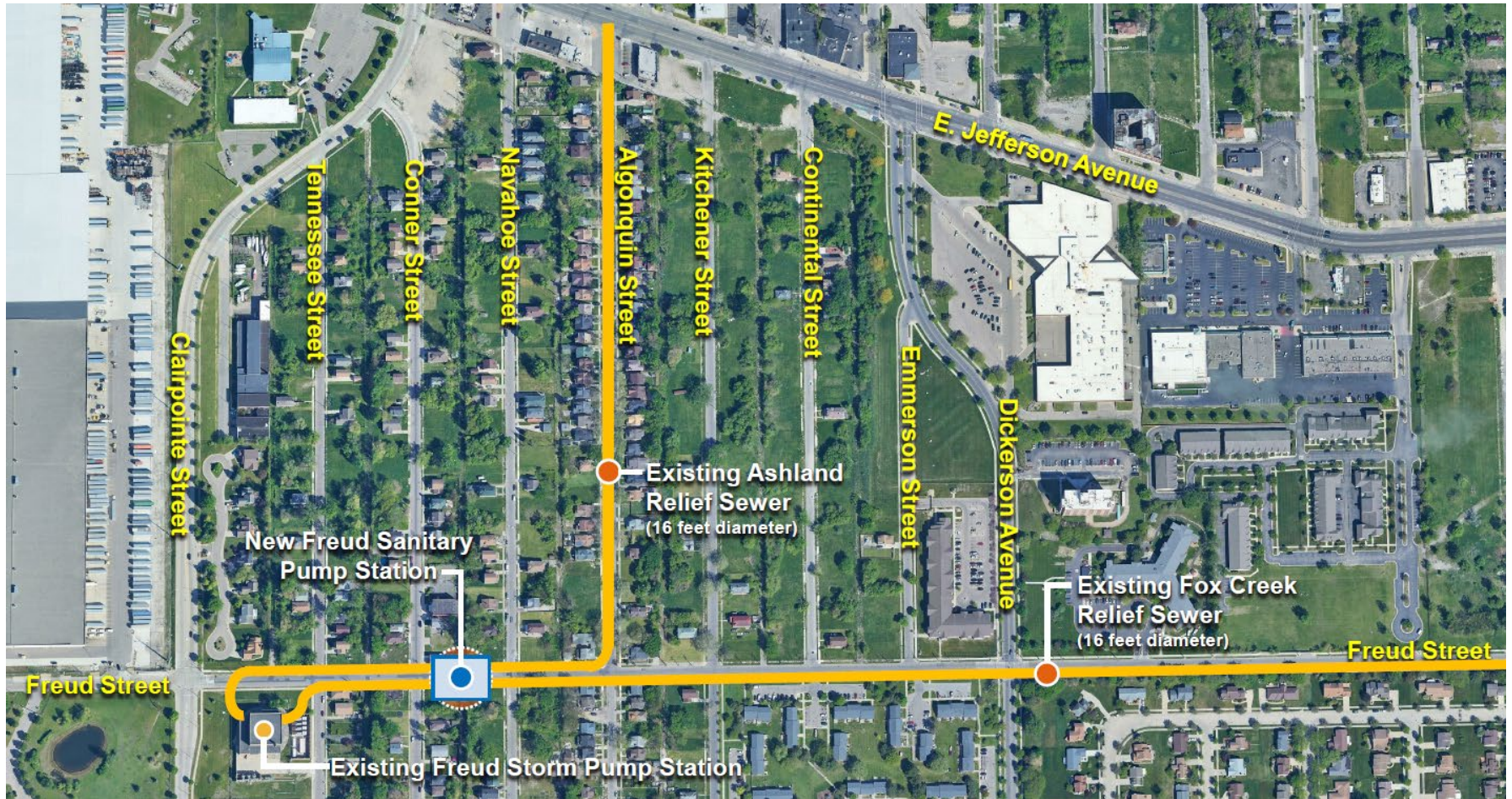
- Power Monitoring and Reliability
- System Access for Routine Maintenance
- Mechanical Upgrades

# Why is GLWA proposing a Sanitary Pump Station?

- 💧 Improve the Reliability of Freud Storm Pump Station
  - 💧 Cleaning
  - 💧 Inspection
  - 💧 Maintenance
  - 💧 Rehabilitation
- 💧 Maximize GLWA's ability to keep sewer water levels low during rain events
- 💧 Help prevent basement backups



# Why was the location chosen?



# Why will Freud be rerouted?



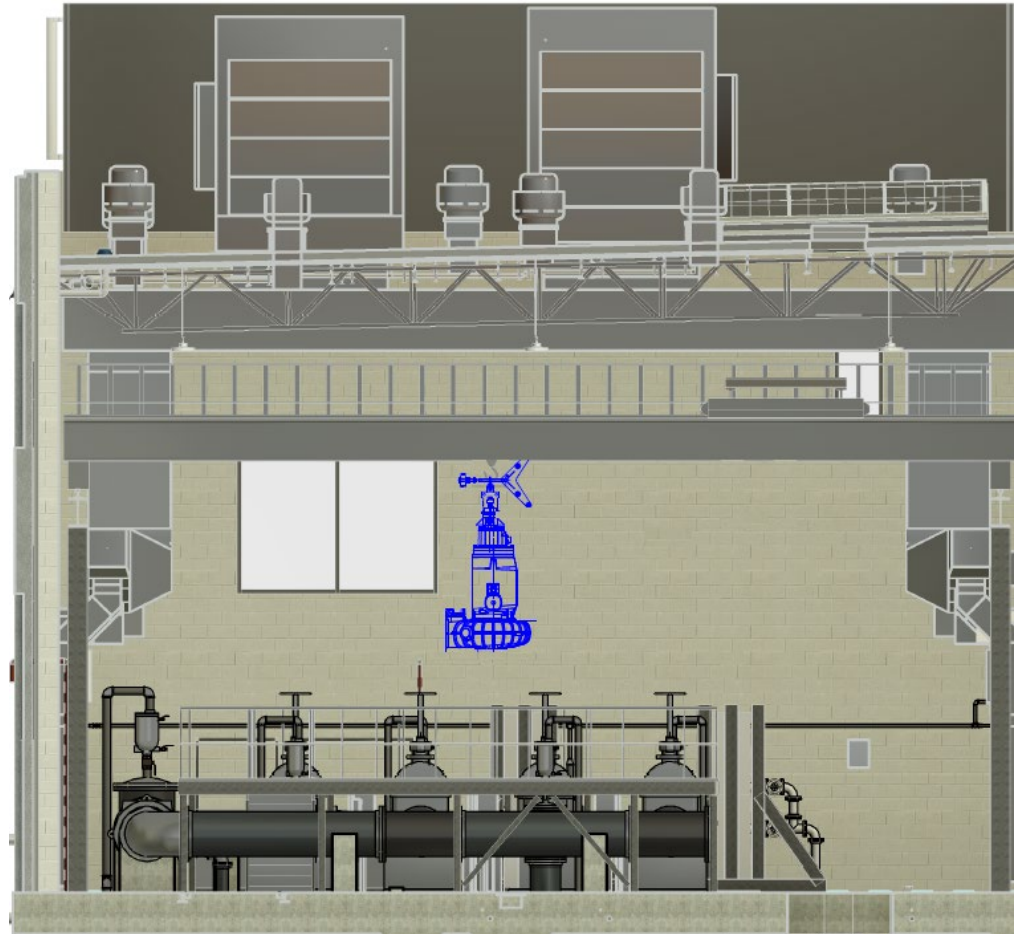
# Why is the building this size?

## ◆ Contain Operations

◆ Crane

◆ Noise

◆ Odor



A dynamic splash of clear blue water against a light blue background, with a semi-transparent blue horizontal band across the middle.

# Project Progress

# Where are we at?

- ◆ Detroit City Council
  - ◆ Vacation of ROW
  - ◆ Dedication of ROW
- ◆ MI EGLE CWSRF
- ◆ Kokosing Industrial, Inc.

# What's next? - Communication

## 💧 Communication

💧 Community Update Meetings - Quarterly

💧 Website - [www.glwater.org/freud-sanitary-pump-station](http://www.glwater.org/freud-sanitary-pump-station)

💧 Email - [freudsanitarypumpstation@glwater.org](mailto:freudsanitarypumpstation@glwater.org)

## 💧 Phone

💧 GLWA - (313) 822-7007

💧 Kokosing – (313) 960-7687

## 💧 Mailers

## 💧 Social Media

# What's next? – Pre-Construction

## 💧 Traffic Study

- 💧 Arcadis/AEW

- 💧 Maintenance of Traffic (MOT)

## 💧 Mobilization

- 💧 Submittals

- 💧 Survey

- 💧 Photographs

- 💧 Ground Monitoring

# What's next? – Construction

- ◆ Site Preparation
  - ◆ Tree Removal
  - ◆ Structure Removal
- ◆ Freud Street Closure
- ◆ Utility Relocation
  - ◆ Gas
  - ◆ Electric
  - ◆ Water
  - ◆ Sewer
  - ◆ Communication
- ◆ Freud Storm Station

A high-speed photograph of water splashing, creating a dynamic, blue-toned background. The water is captured in mid-air, with numerous droplets and bubbles visible. The overall color palette is various shades of blue, from light sky blue to deep navy blue.

# Questions