



New Freud Sanitary Pump Station Frequently Asked Questions

BACKGROUND

Why is GLWA building this new sanitary pump station?

This project is focused on improving the maintainability and, in turn, the reliability of one of the two major pump stations that serve the east side of the GLWA wastewater conveyance system. By building this new Freud Sanitary Pump Station, GLWA will be able to better access, maintain, and ensure that the existing Freud Storm Water Pump Station is at full capacity and ready to move up to two billion gallons per day from its service area, including the Jefferson-Chalmers neighborhood, during wet weather events.

The new sanitary pump station on Freud Street will provide for the pumping of sanitary, dry weather flows directly from the 16-foot diameter Ashland and Fox Creek Relief Sewers located directly below the station to the Detroit River Interceptor Sewer (DRI) on Jefferson Avenue. By diverting the flow from these relief sewers to the DRI, wastewater will be kept out of the existing Freud Storm Pump Station, which will allow for it to be focused on pumping combined sewer wet weather flows to the Conner Creek Combined Sewer Overflow (CSO) Retention Treatment Basin (RTB) for settling and disinfection prior to discharge to the Detroit River.

What are the benefits of the new Freud Sanitary Pump Station?

By diverting the sanitary dry weather wastewater flows from the existing Freud Storm Pump Station wet well, GLWA is better able to perform the necessary maintenance of the facility's eight large storm pumps during dry weather. Without the capability to divert this flow the necessary maintenance would be unable to be performed without the use of large bypass pumping systems that would be disruptive to the surrounding neighborhood and its residents. The ability to perform this maintenance will increase the reliability of pumping wet weather stormwater flows which will further help avoid basement backups in both the immediate Jefferson-Calmers neighborhood and the overall area served by the Conners Creek and Freud Storm Pump Stations.

How large will the new building be?

The building will be roughly the same size as the existing pump station, which will allow the large pumps to be maintained/serviced within the structure year-round without exposing the surrounding neighborhood to any potential odors from the maintenance of the sanitary pump station.

Why did GLWA select this site?

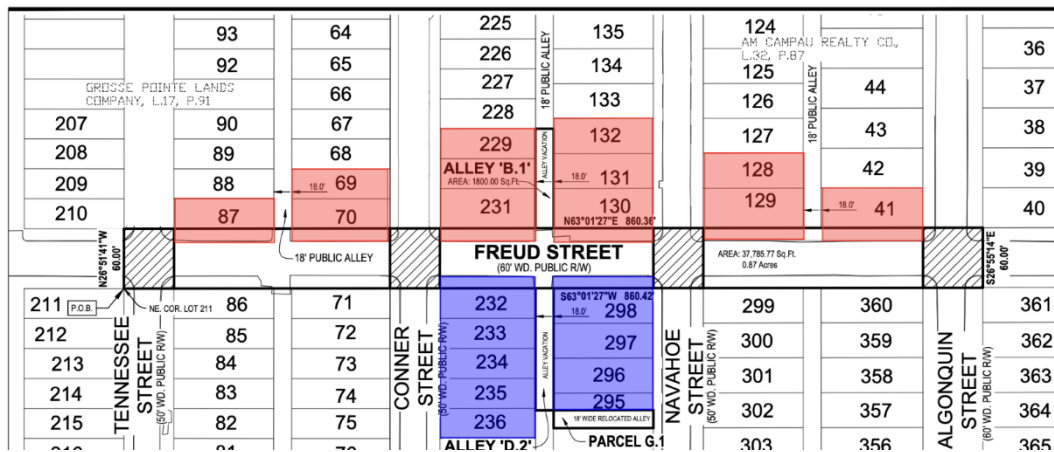
There is a small window along Freud St between Tennessee St and Algonquin St where the Ashland Relief Sewer and Fox Creek Relief Sewer run in parallel. This window provides GLWA the opportunity to construct one station that can service both sewers rather than needing to construct two separate stations.

Were any other sites/locations considered for this facility?

Multiple sites/locations and alternatives were considered. However, the selected site was the only viable location based on the orientation of the Ashland Relief and Fox Creek Relief sewers.

How many properties did GLWA acquire to complete construction of the new sanitary pump station?

GLWA purchased a total of 22 parcels for this project. These parcels allow for construction of the new station (in purple), as well as the revised road right of way for Freud (in red) as shown below.



Will any additional properties be acquired for this project?

We do not currently anticipate the need to acquire any additional properties.

How is this project being funded?

The project is being funded through a low-interest loan from the Michigan Clean Water State Revolving Fund ([CWSRF](#)).

How much will this project cost?

The estimated cost for construction of the new Freud Sanitary Pump Station is \$138 million.

CONSTRUCTION

How long will it take to build the new Freud Sanitary Pump Station?

This project will take approximately four years to construct.

How loud will the construction be?

We will take every step to minimize noise during the demolition and construction phase. There will be some audible noise from heavy equipment and demolition of structures and concrete. At a minimum, the contractor will comply with the city of Detroit noise ordinance.

Will the construction site have security?

Yes, the construction site will have 24/7 security, and will be secured with locked gates and only credentialed workers will be allowed to access the site.

What hours/days will the construction site be active?

GLWA and its contractors will maximize time each day to accomplish the work as efficiently and safely as possible. Crews are expected to be working from 7:00 AM until 5:00 PM, Monday-Friday.

How will you handle dust and other contaminants at the site during construction?

GLWA's construction and engineering team will use abatement and dust control techniques, such as misting, when demolition of existing structures occurs. While we are excavating the site for construction, there will be routine dust control measures, such as water trucks and road sweepers, used to control dust on-site and the access roads to and from the site. The contractor will keep the roads clean during all phases of the work.

What will GLWA do with all the trees they are taking out?

For every mature tree removed GLWA will be planting two new trees within the overall project footprint.

How will GLWA make the building fit in within the neighborhood?

GLWA is working with the Detroit City Council, the City's Planning & Development Department, City Planning Commission, and a local architect to ensure that the building is designed with the Jefferson Chalmers Neighborhood Framework Plan in mind.

Will local residents be offered the opportunity to apply for jobs at the site?

GLWA has multiple opportunities for employment available. More information on these opportunities is available at <https://www.glwater.org/careers/>.

ROAD CLOSURES

When will roads be closed and for how long?

GLWA anticipates road closures on Freud Street, Conner Street, and Navaho Street for the duration of the project, and is currently working with its contractor to reduce the length of the road closures, to the extent possible. Residents will be informed of any road closures one month in advance.

Residents and emergency services will be able to access all residential properties throughout the entire project.

PUMP STATION OPERATIONS (ONCE BUILT)

Will the plant be automated or staffed with personnel?

As with most modern facilities, the Freud Pump Station will be automated. However, the facility will have technicians and security personnel that make rounds to this and other facilities in the area regularly to maintain the grounds, building, equipment, and ensure no disruption to service occurs.

Will the facility have security?

Yes, the facility will be secured and remotely monitored by GLWA's Security & Integrity Group on a 24/7 basis.

What are the operating hours of the facility?

This facility will operate year-round on a 24/7 basis.

Will there be odors emanating from the facility?

No. The building is designed to contain any odors associated with daily and maintenance operations. Note that there are no odor complaints associated with the existing Freud Pump Station and that the Ashland and Fox Creek Relief Sewers are located approximately 65 feet beneath street level.

Will the facility be loud?

No. The only exterior noise would be the normal hum from HVAC and electrical systems associated with any commercial building.

What is contingency plan in the event of a major storm event?

The purpose of this facility is to handle dry weather flows so that the existing Freud storm water pumps can be better maintained. GLWA will continue to operate the system in accordance with their standard operating procedures in the event of a major storm event.

SERVICE INTERRUPTIONS

Will my water service be disrupted by the construction?

Residential water services should not be disrupted by the construction.

COMMUNICATIONS

Who do I contact if I have a complaint about noise or personnel at the construction site?

Prior to starting construction GLWA's contractor for the project will provide an email address and phone number to contact for any issues that arise during construction. This information will be posted at the jobsite and included in a mailing and/or door hanger that will be distributed prior to construction.

Where do I go if I have additional questions?

You can visit <https://www.glwater.org/freud-sanitary-pump-station/> to see updates and email the Freud Sanitary Pump Station Project Manager at paul.ransom@glwater.org in the event you need to contact someone at GLWA.