

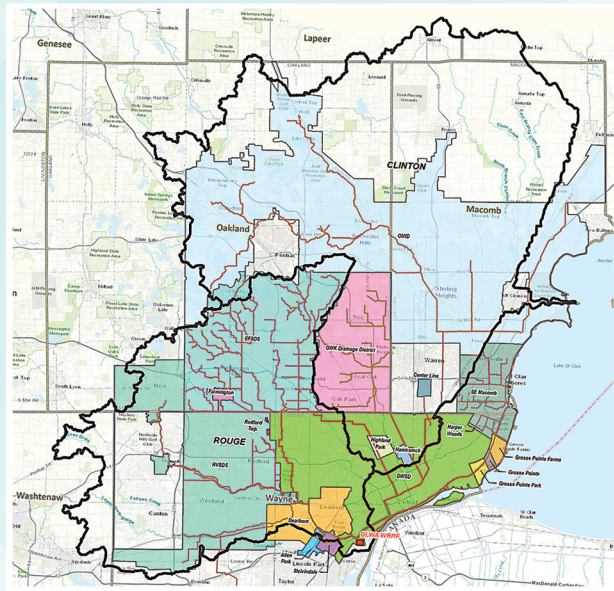
WASTEWATER MASTER PLAN

The Wastewater Master Plan is the Great Lakes Water Authority's strategy for providing wastewater services to its member communities and ultimately, residents and businesses in southeast Michigan. The plan ensures that the wastewater system meets current and future needs and is able to provide cost-efficient, regulatory-compliant and reliable services to GLWA member partners for the next 40 years.

GLWA and its member partners will begin implementing the Wastewater Master Plan in early 2020.

REGIONAL FORECAST

40 YEAR PLANNING DOCUMENT 2020 – 2060



PHASE 1 Optimize Existing Infrastructure

Cost-effective solutions to meet water quality priorities

- Reduce public health risks by maximizing the amount of wastewater flow captured in the collection system, especially during frequent, small storms
- Achieve Michigan Water Quality Standards for recreation and aquatic species protection in dry weather



PHASE 2 Adapt and Expand Facilities

Further investment to extend water quality benefits

- Expand public health protections with added storage, sewer separation, and further maximize wastewater flow to the Water Resource Recovery Facility (WRRF)
- Achieve Michigan Water Quality Standards for recreation in dry weather and aquatic species protection in wet weather



PHASE 3 Sustain System Performance

Sustainably meet wet weather regulatory requirements

- Implement emerging technologies and infrastructure maintenance programs to cost effectively meet regulatory requirements
- Invest in new treatment processes and instrumentation to maximize the use of existing facilities with real time control

5 OUTCOMES OF THE WWMP



1. Protect public health and safety
2. Preserve natural resources and a healthy environment
3. Maintain reliable, high-quality service
4. Assure value of investment
5. Contribute to economic prosperity