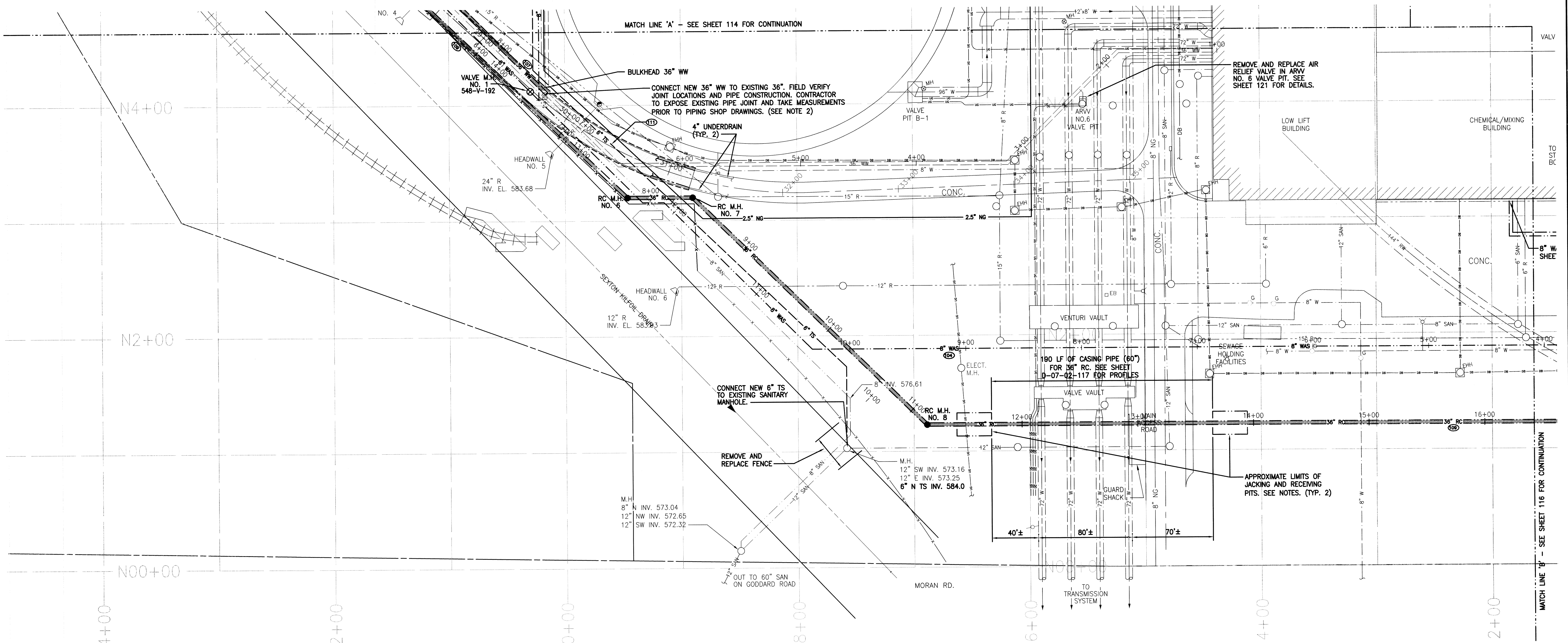
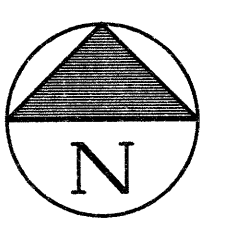


6
5
4
3
2
1
0

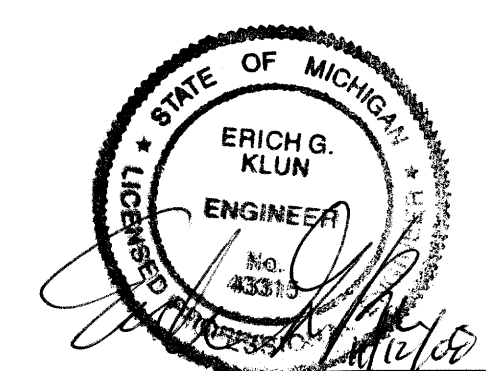


- NOTES:
- CONTRACTOR TO EXCAVATE AND FIELD LOCATE EXISTING UTILITIES PRIOR TO INSTALLATION. ROUTES MAY BE ADJUSTED IN THE FIELD BY THE ENGINEER TO ACCOMMODATE EXISTING UTILITIES.
 - EXISTING 36" WW PIPE IS AWWA C302 PRESTRESSED CONCRETE PRESSURE PIPE. NEW 36" WW TO BE EITHER DUCTILE IRON OR PRESTRESSED CONCRETE CYLINDER PIPE WITH ADAPTOR PER SECTION 02628.
 - JACKING AND RECEIVING PITS TO BE MINIMUM OF 40' AWAY FROM 72" TRANSMISSION MAINS. PROVIDE TEMPORARY EARTH RETENTION AS NECESSARY TO PROTECT EXISTING FACILITIES. EXISTING UTILITIES SHALL NOT BE INTERRUPTED. SEE SHEET 129 FOR TYPICAL DETAILS.
 - SEE SHEETS 117 AND 118 FOR YARD PIPING PROFILES.

3 WORKING DAYS, EXCLUDING SATURDAY, SUNDAY & HOLIDAYS BEFORE YOU DIG CALL MISS DIG 800-482-7171 (TOLL FREE)

F					
E					
D					
C					
B					
A	FINAL DESIGN ISSUED FOR ADVERTISEMENT		12/08		
	DESCRIPTION	CHK'D	APRVD.	DATE	
	REVISIONS				

DESIGNED BY	EGK
DRAWN BY	MJB
CHECKED BY	JBD
APPROVED BY	TWL



**SOUTHWEST WATER TREATMENT PLANT
WASTE WASHWATER & SLUDGE TREATMENT FACILITY**

**YARD PIPING PLAN
(SOUTHWEST)**

SCALE: 1" = 40'

DATE: 11-17-08

CITY OF DETROIT WATER AND SEWERAGE DEPARTMENT ENGINEERING DIVISION		MDEQ PERMIT NO. W084275
TETRA TECH SIGMA CONSULTING ENGINEERS Sigma Associates, Inc. NTH Consultants, Ltd. Infrastructure Engineering and Environmental Services 480 Ford Field, 2000 Brush Street Detroit, MI 48226		FED. REF. NO.
SECTION MAP 1 3 - C 3 S 10 E 0 0 4		CONTRACT NO. SW-548
PORTION CODE DRMS NO. 3466		FILE NO.
		D-07-02-115

11/17/2008 11:28 AM P:\1230515020\CAD\DWG\SITE\YARD PIPING.DWG