

OAKLAND COUNTY  
BLOOMFIELD TOWNSHIP

DUVAL DR. 60'

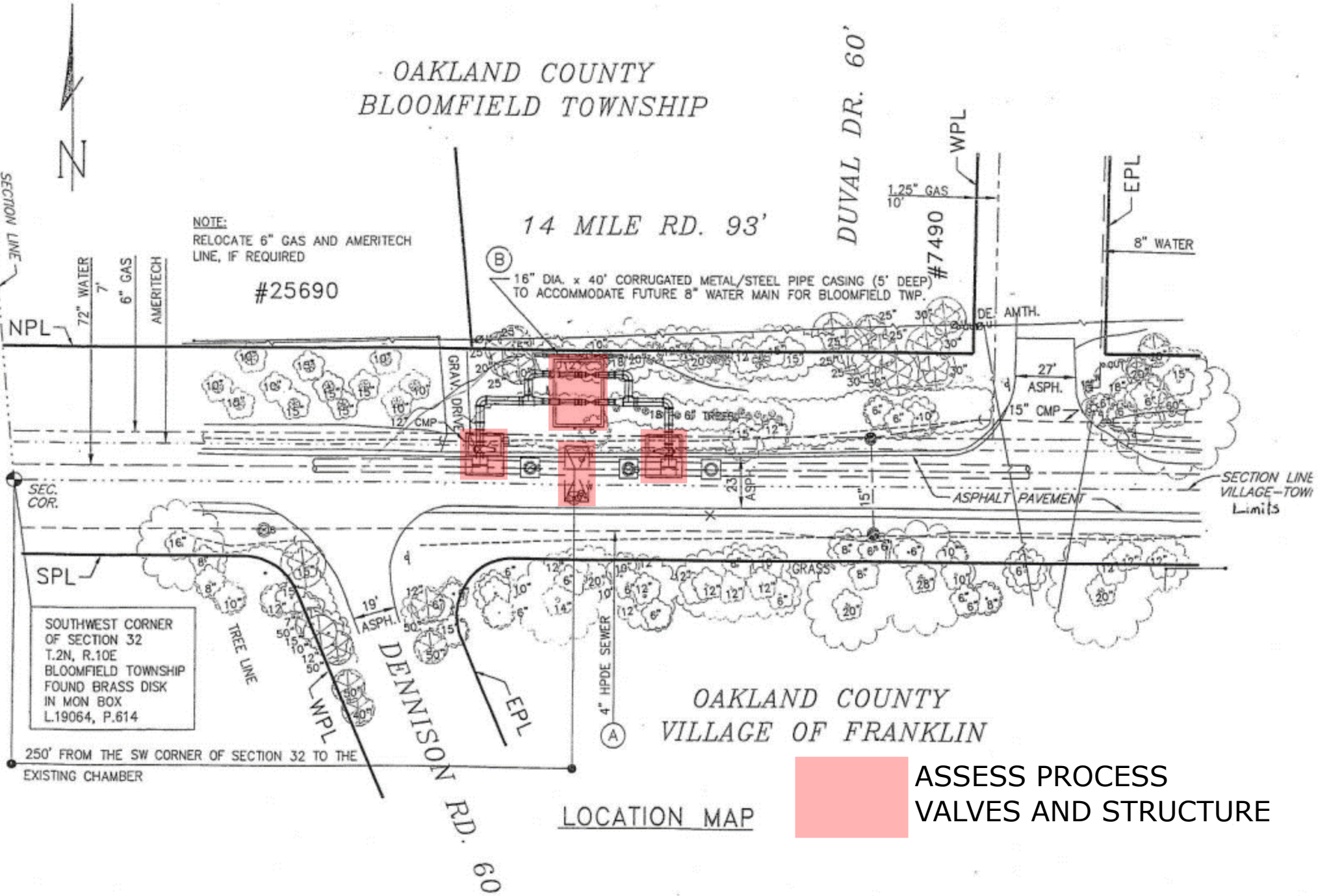
14 MILE RD. 93'

NOTE:  
RELOCATE 6" GAS AND AMERITECH  
LINE, IF REQUIRED

#25690

(B)  
16" DIA. x 40' CORRUGATED METAL/STEEL PIPE CASING (5' DEEP)  
TO ACCOMMODATE FUTURE 8" WATER MAIN FOR BLOOMFIELD TWP.

#7490



SOUTHWEST CORNER  
OF SECTION 32  
T.2N, R.10E  
BLOOMFIELD TOWNSHIP  
FOUND BRASS DISK  
IN MON BOX  
L.19064, P.614

250' FROM THE SW CORNER OF SECTION 32 TO THE  
EXISTING CHAMBER

OAKLAND COUNTY  
VILLAGE OF FRANKLIN

LOCATION MAP

ASSESS PROCESS  
VALVES AND STRUCTURE